



St John Plessington Catholic College

SIXTH FORM

Course Guide 2023 - 2024



Contents

3	Welcome	35	Further Mathematics
4	Why St John Plessington Sixth Form?	36	Media & Film Studies BTEC Level 2
6	What sets us apart...	37	Media & Film Studies Level 3
7	Our Courses	38	Media & Film Studies BTEC Level 3
8	Advanced Level 3 Courses	39	Music BTEC Level 3
10	BTEC & GCSE Level 2 Courses	40	Performing Arts BTEC Level 3
13	First Class Facilities	41	Physical Education
14	The SJP Experience	42	Physics
16	How do we help you on your journey?	43	Psychology
18	Art	44	Public Services BTEC Level 2
19	Biology	45	Religious Education
20	Business Studies BTEC Level 3	46	Science (Applied) BTEC Level 3
21	Chemistry	47	Sociology Level 3
22	Design & Technology: Fashion & Textiles	48	Spanish
23	Design & Technology: (Food Science) BTEC Level 3	49	General RE
24	Design & Technology: Graphics (Product Design)	50	How to Apply
25	Design & Technology: Product Design	51	Careers
26	English Combined	52	Travel Routes to the College
27	English Literature		
28	Geography		
29	Health & Social Care		
30	History		
31	ICT BTEC Level 3		
32	ICT Computing BTEC Level 3		
33	Mandarin		
34	Mathematics		

Welcome to St John Plessington Sixth Form College



As you approach the next stage of your compulsory education you have many important choices to make with a range of opportunities available to you. The next two years should be some of the best years of your life and will provide you with memories to last a lifetime.

Our Sixth Form students are a credit to themselves, their families and our school community. They make and invaluable contribution to the college.

We have a student-centred approach to all we do. We are totally committed to providing the very best education we can offer, not just academic but also extra-curricular. We offer not only first class facilities but also an enhanced curriculum that should provide a pathway for all students. We feel that as our Sixth Form grows, everyone should have the opportunity to study here and hopefully this is reflected in the wide range of courses on offer.

If you are a current student at SJP, you will already know that the staff here will go that extra mile for you Sixth Form life is very different. You will be given greater privileges and responsibilities, both for your own formation and the well-being of others.

You will be taught in smaller groups, have more self-directed study time and will work towards becoming a highly successful, capable and independent learner, ready to tackle the challenges of life after SJP. Those new to our Sixth Form are welcomed with open arms, make new friends quickly and benefit from all that SJP has to offer. We also benefit from the experience you bring with you and together we shape the best future. Throughout your time with us you will receive the very best pastoral and academic support possible. Sixth Form whilst challenging and worthwhile, preparing you for life at university and the workplace, also has to be enjoyable.

Come join us as you continue on your journey...

Ms M Sharratt
Headteacher

Why St John Plessington Sixth Form?

Wide range
of courses

Quality
Teaching &
Learning

Phenomenal
success rate
into higher
education

£2m Sixth Form
Building
Investment

High
Achieving
Students

Close
monitoring
& tracking of
academic
progress



What sets us apart...

- ▶ **A welcoming environment**
- ▶ **A Sixth Form where we know you or get to know you very quickly**
- ▶ **Close monitoring and tracking of academic progress**
- ▶ **We are an outstanding provider**
- ▶ **Courses to suit everyone's needs**
- ▶ **Enrichment and volunteering opportunities to enhance your personal development**
- ▶ **Outstanding communication with parents**
- ▶ **State of the art Sixth Form facilities**
- ▶ **Supervised learning environments designed for Sixth Form study**
- ▶ **Sixth Form dedicated specialist teachers**
- ▶ **Outstanding care, guidance and support**
- ▶ **UCAS and career guidance second to none**
- ▶ **Extremely high retention rate**

Our Courses

Your Results

Course Choices

Five GCSEs at grades 9 - 4 (including Maths and English Language)

▶ Advanced Level (A Levels and BTEC qualifications)

GCSEs at grades 3 - 2

▶ Elevate package
Foundation courses at level 2 leading to level 3 courses

GCSEs at grades 2 - 1

▶ Please contact the Sixth Form Team for advice

Advanced Level 3 Courses

A Levels & BTEC Qualifications

Below is an example of a standard pathway for our Level 3 courses:

Entry

Five GCSEs at grades 9 - 4 (including Maths and English Language)

Year 1

Study three A Level subjects or BTEC equivalent qualifications

Year 2

Study three A Level subjects or BTEC equivalent qualifications

Progress

University, employment, or further education/higher education course

A Level Subjects

Art	Geography	Religious Education
Biology	History	Sociology
Chemistry	Mandarin	Spanish
Design & Technology (Fashion & Textiles)	Mathematics	
Design & Technology (Graphics)	Further Mathematics	
Design & Technology (Product Design)	Media & Film Studies	
English Combined	Physics	
English Literature	Psychology	

BTEC Level 3 Extended Certificate equivalent to 1 A level

- Business Studies
- Design & Technology (Food Science & Nutrition)
- Health & Social Care
- ICT or Computer Science
- Media & Film Studies
- Music
- Performing Arts
- Physical Education
- Applied Science

BTEC & GCSE Level 2 Courses

BTEC & GCSE Qualifications

Below is an example of the sort of progression you can expect from our Level 2 courses:

Entry

GCSEs mostly at Grade 2 - 3

Year 1 Study:

BTEC Level 2 Diploma; may include GCSE resits (or equivalent courses) in Maths and/or English

Year 2 & 3:

Study for Level 3 Advanced Level courses and follow a similar pathway to that outlined on page 8

BTEC Diploma Level 2

Public Services

Media & Film Studies

GCSE / Level 2

English

Maths

First Class Facilities

Valuable Enrichment Opportunities

Our Sixth Form Centre provides university-style independent study facilities for our students. There is a large open plan study area, incorporating state of the art ICT facilities and Wi-Fi access, as well as offices for the Sixth Form Pastoral Team. This new build connects with our College Library which our students can access, with additional computer facilities available. The Study Centre also provides a number of bespoke Sixth Form classrooms, including a new Media Suite with an additional area for film and media development, where pupils will study in a truly inspirational environment.

The Refectory

Staff and Sixth Formers have the opportunity to come together and share a mutual working and relaxation area near the dining room. It is equipped with Wi-Fi access and staff and students are able to eat and drink in this area, as well as work in a productive environment during study periods.



The SJP Experience

We are immensely proud of all that the Sixth Form contribute to the school as well as our local and wider communities. The energy and enthusiasm of our students has transformed the lives of many others. All Sixth Form students are expected to commit at least one hour each week to such service.

Some of the many projects SJP Sixth Formers are involved in include:

- Fundraising for whole school charities
- Peer mentoring of younger students
- Offering support to tutors and teachers
- Acting as Literacy and Numeracy buddies
- Taking an active part in school events such as Open Evenings
- Working with younger pupils in music and drama activities
- Role models and group leaders in SJP Experience Weeks
- Key role in 'Here Comes Christmas!' fun and fundraising extravaganza
- Leadership of the School Council
- Eco-team
- Faith in Action Team
- Taking part in many music and drama productions
- Sports Leadership
- Duke of Edinburgh's Award

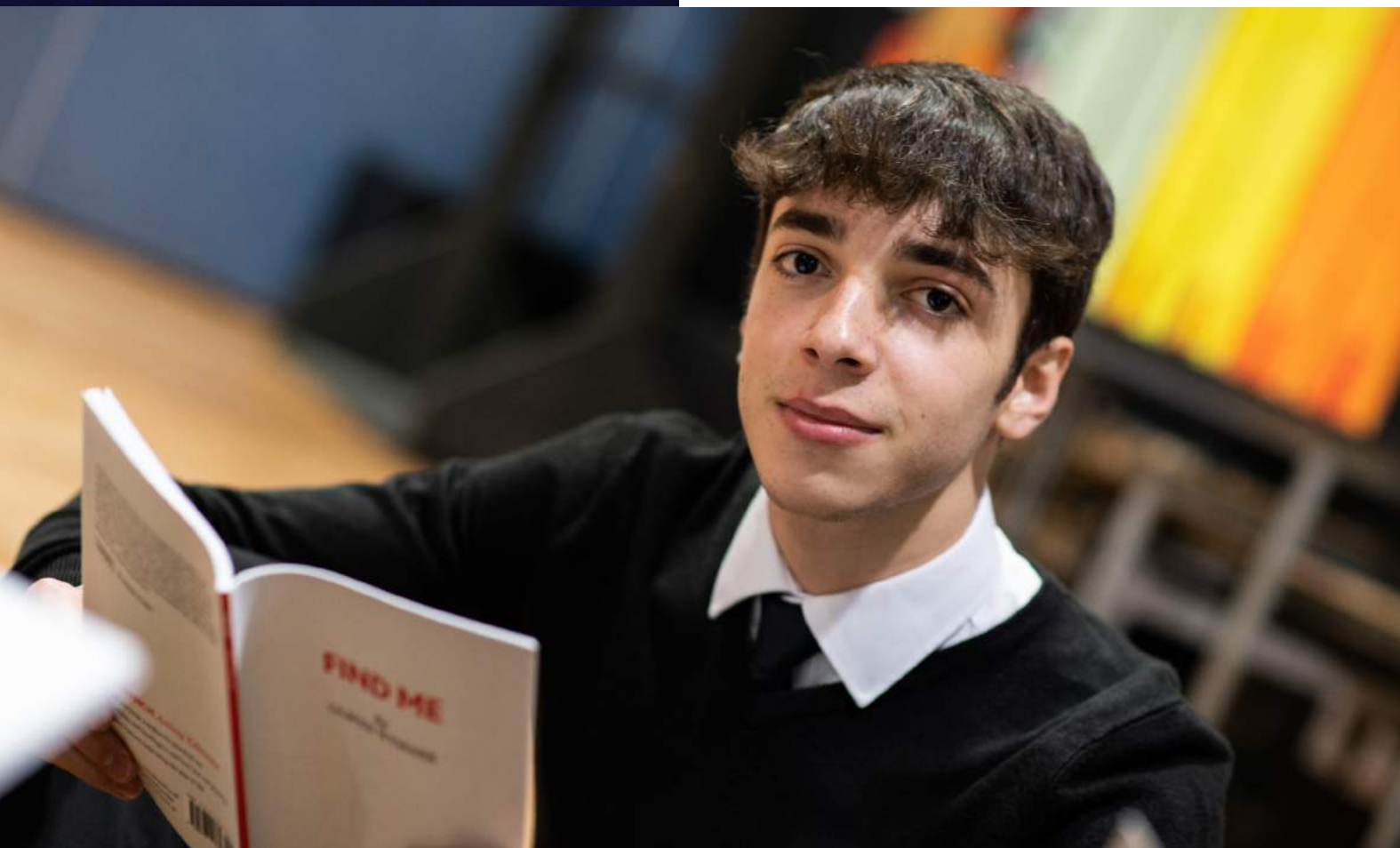


Valuable Enrichment Opportunities

Many opportunities are on offer, whether it is being elected to the Junior Leadership Team, undertaking voluntary service or work experience, playing in a sports team, learning a musical instrument, acting on stage or travelling to one of many destinations abroad.

Spiritual Life

At the heart of the Sixth Form is our faith. We are a Catholic Sixth Form which welcomes people of all faiths to our community.



How do we help you on your journey?

Career Guidance

The College provides a thorough programme of monitoring and guidance for students to progress to the adult world. We ensure that every individual is prepared with what they need to know in order to achieve their goals. This includes an extensive UCAS programme, dedicated to supporting students in the process of selecting and applying to university. Those not choosing to go to university or further study will benefit from working with our own Work Related Learning Co-ordinator, who has links with and knowledge of local employers.

You will be supported with expert advice re applications to apprenticeships and employment.

Student Bursary

A Financial bursary is available for some students to help with their studies. Speak to the Sixth Form Team for more details.

Pastoral Care

All students will have ongoing discussions covering general academic progress, student concerns, tutor concerns and issues relevant to careers. Tutors are expected to keep themselves informed about members of their tutor group by talking to students and checking progress. Tutors may arrange for contact with home to be made but will usually discuss matters with the student as a first step. Tutors will record any action taken and liaise with the Head of Learning and with the relevant subject teachers. The Head of Learning will arrange a parental meeting if concerns are ongoing.

Academic Monitoring

Students are provided with progress meetings over the two academic years of study. These involve an interview with their Learning Coach, in which academic progress is discussed and future targets set.

In addition to this, students receive two Progress Reports per year. Any concerns regarding academic progress will be shared with both student and parent.



This subject is offered as an A Level course in Art, Craft & Design over two years.

The course is essentially concerned with exploiting traditional art media, in keeping with developments in contemporary art practice, you are encouraged to explore a range of media and experimental approaches. This includes digital technology to facilitate an engagement with more 'cutting edge' methods of visual expression. This is likely to involve a study and exploration of more innovative conceptual approaches to visual communication common to the expanded field of art practice today. This will also incorporate an emphasis on the value of drawing and reflective annotation to record the creative process, whilst exploring a wide range of media.

The overall aim of the course is therefore to encourage an adventurous and enquiring approach to art and design which is informed and developed through an in-depth study of both historical and contemporary art practice. In turn this should enable you to embrace and explore a range of ideas in your work of both a personal and an objective/analytical nature and, in so doing, harness a meaningful appreciation of visual culture.

First Year of A Level

The Year 12 course is comprised of one internally assessed component, the 'Personal Creative Enquiry'; this component requires you to keep a working portfolio which can be defined as a combination of a sketchbook and a visual diary comprising of drawings, paintings, photographs, written notes documenting ideas and other visual research materials. The progression of your work at all stages will be nurtured and stimulated by an organised extra-curricular enrichment programme to include both virtual and hands on gallery and practical workshop visits. This first part of the course allows you to explore and discover new media/techniques which you have never been exposed to before. Allowing us to work together to personalise the course to your skills and interests.

Year 12 Component: Personal Creative Enquiry: 100%

This is an internally assessed unit in which you will generate and develop ideas through drawing, painting, photography, and other disciplines such as ceramics and printmaking. You will also research artists, Art movements and experiment with media and processes.

Second Year of A Level

Year 13 Component 1 Personal Creative Enquiry 60% of A Level
This is an externally assessed unit in which you have a choice of starting points which are very open ended. You are required to research images using your own photography, internet, and

books and also draw from life. Practical work is presented in a sketchbook which shows the clear development of a final piece which could be a painting, sculpture, textile piece or any other creative idea. Art links will also be used for inspiration. The aim of the project is to meet the 4 Assessment Objectives used in marking the work – these cover drawing, use of media and idea development and use of art history sources, as well as producing a final outcome. Reflective annotation should be included in your sketchbook. You will be encouraged to develop your own ideas with the help and guidance of your teacher.

You will undertake a practical investigation into an idea, theme, issue or concept. This practical work will be supported by written material. The focus of the investigation will be identified independently by you and will lead to a finished outcome (a final piece of work). The investigation will demonstrate your ability to develop a cohesive line of argument whilst evidencing your practical skill. A wide range of techniques will be explored using an appropriate range of materials.

A Level Component 2 Externally Set Assignment: 40% of A Level

The question paper consists of a choice of questions to be used as starting points. You will be required to choose one of these questions as the focus for your investigations. The question papers will be provided on 1st February or as soon as possible after this date. Following the preparatory period, you will undertake 15 hours of unaided supervised time in which they will develop an outcome or a series of outcomes.

Is there anything else I should know?

A level Art allows you to develop an exciting and extensive range of creative, communication and technical skills. Art can mix very well with subjects such as Design & Technology, Media and History which deal with moral and social issues and support your understanding of art through cultures and history. They also support you to explore personal attitudes and links to changes and events in society and how Art plays a huge part in recording history.

Entry Requirements

Grade 4 in Art GCSE. It may be possible to study Art without GCSE however you will be required to share examples of your work and this will be assessed. You must have 5 qualifications at level 2 at grade 4/pass or above.

This subject is offered as an A Level course over two years.

Entry Requirements

Grade 4 in Art GCSE. It may be possible to study Art without GCSE however you will be required to share examples of your work and this will be assessed. You must have 5 qualifications at level 2 at grade 4/pass or above.

If you are interested in how the body functions; genes and genetics, disease, nature and the environment - if you can absorb facts, sort and synthesise a lot of information, as well as explain things fully - if you want to continue to study Biology at university level - then Biology A Level is for you. At SJP, Biology is taught in a linear course that is practical, modern and relevant to society today. We work with individuals to find suitable career paths and work placements, where necessary, to motivate you and support you in gaining a place at the university of your choice.

Course Content

1. Biological Molecules.
2. Cells.
3. How organisms exchange substances with their environment.
4. Genetic information, variation and relationships between organisms.
5. Energy Transfers in and between organisms.
6. How organisms respond to changes in their internal and external environments.
7. Genetics, populations and ecosystems.
8. The control of gene expression.

Assessment

As with Physics and Chemistry, Biology is taught as a linear course that is assessed by examinations in June.

Paper 1: Topics 1 - 4, including relevant practical skills and extended response questions.

Examination - 2 hours 35% of the overall A Level Marks

Paper 2: Topics 5 - 8, including relevant practical skills and comprehension question.

Examination - 2 hours 35% of the overall A Level Marks

Paper 3: Topics 1 - 8, including relevant practical skills, critical analysis of given experimental data and one essay question.

Examination - 2 hours 30% of the overall A Level Marks

Progression Routes

Biology is highly regarded and considered a 'facilitating subject' for the top universities in the country, regardless of the degree that you wish to study. It provides an excellent grounding for those wishing to progress onto Law and other 'humanities' subjects but also for Medicine and Veterinary Science as well as Business or Management.

Biology is a good choice for students looking to progress into careers such as Health, Research and Clinical Professionals in areas including Medicine, Dentistry, Veterinary Science, Physiotherapy, Pharmacy, Education, Optometry, Nursing, Zoology or Marine Biology.

Entry Requirements

Grade 6 in Biology/6-6 Combined Science. Grade 4 in Maths. Candidates at A level who achieve a grade E or above have the above requirements, plus a grade 6 in at least 2-3 more related subjects at GCSE.

You must have 5 qualifications at level 2 at grade 4/pass or above.

This subject is offered as an A Level course over two years.

If you are looking for a career in business and want to develop skills and understanding that are directly relevant to the business world, then this BTEC qualification is for you. This course will help build your skills, knowledge and understanding of the business environment which are needed to continue studying to degree level and to start work. The skills and experience you will receive are vital to succeed in the business environment, thereby enhancing your employability within the business sector. Ideally you will be a good communicator, both in written and verbal forms, confident, conscientious and able to work independently.

Units of Study and Assessment

There are a total of four units (three mandatory and one optional). Two of the units are internally assessed and worth 42% of the overall grade. Two units are externally assessed and worth 58% of the overall grade.

Candidates must achieve four units over two years in order to gain the full award equivalent to one A Level.

The course also provides the flexibility of completing two of the core unit's in one year equivalent to 0.5 A Levels.

The units from this qualification are graded as Pass, Merit or Distinction. The total of each unit will determine the overall grade for the course.

The overall grade equivalents are detailed below:

PASS - Equivalent to E grade.

MERIT - Equivalent to C grade.

DISTINCTION - Equivalent to A grade.

DISTINCTION * - Equivalent to A* grade.

Unit 1: Exploring Business (25%)

This is mandatory unit that is internally assessed. It will help you gain an overview of key ingredients for business success, how businesses are organised, how they communicate, the characteristics of the environment in which they operate and how this shapes them and their activities. You will also look at the importance of innovation and enterprise to the success and survival of businesses, with the associated risks and benefits.

Unit 2: Developing a Marketing Campaign (25%)

This is a mandatory unit that is externally assessed under supervised conditions based on a given case study. During this unit you will have the opportunity to create your own marketing campaign. This will allow you to understand every step of the process to give you the opportunity to develop the skills and knowledge you will need to be successful in the field of marketing. You will gain an insight into the importance of marketing to business success.

Unit 3: Personal and Business Finance (33%)

This is a mandatory unit that is externally assessed by an unseen paper-based examination. This unit will help you understand how to manage your personal finances and make informed decisions to help prevent future financial difficulties.

The business finance aspects of the unit introduce you to accounting terminology, the purpose and importance of business accounts and the different sources of finance available to businesses. Planning tools, such as cash flow forecasts and break-even, will be prepared and analysed. Measuring the financial performance of a business will require you to prepare and analyse statements of comprehensive income and statements of financial position. It will help you analyse profitability, liquidity and business efficiency.

Unit 8: Recruitment & Selection Process (17%)

In this unit you will learn that successful recruitment is key to maintaining the success of a business, as people are often considered to be the most valued resource. You will explore the various selection tools and the enhanced use of technology in this area. Businesses with an effective recruitment process in place are more likely to make successful appointments. In a competitive labour market this is a major advantage and will support business success. This unit gives you the opportunity, through role play, to take part in selection interviews. They will need to be organised and prepared so that they demonstrate your communication skills in this work-related competence.

Is there anything else I should know?

The new BTEC Level 3 Nationals in Business have been designed to accredit candidates' achievement in a modern and practical way that is relevant to the workplace. There is no requirement for candidates to have achieved a Level 2 Business qualification before progressing to this award.

Employment in a business related role - for example: Supervisory or Management Trainee; entry to college or university for further study; work towards work-related and vocational qualifications in Business.

Entry Requirements

Ideally you will have a grade 4 in Maths.

You must have 5 qualifications at level 2 at grade 4/pass or above.

Chemistry

A Level

Level 3

This subject is offered as an A Level course over two years.

Chemistry is the study of everything material. What we eat, wear, drive, build and listen to is all affected by Chemistry.

You will gain a challenging and fascinating insight into the building blocks of our planet. Starting with the structure of atoms and how they bond together, the course covers many aspects of organic, inorganic and physical chemistry. The practical aspects of the course will develop your analytical skills using a range of chemicals and high-precision equipment.

Course Content

A First Year of A-Level

Physical Chemistry (atomic structure, amounts of substances, bonding, energetics, kinetics, chemical equilibria and Le Chatelier's Principle).

Inorganic Chemistry (periodicity, Group 2 Alkaline Earth Metals, Group 7(17) The Halogens).

Organic Chemistry (alkanes, halogenoalkanes, alkenes, alcohols, organic analysis).

Second Year of A-Level

Physical Chemistry (thermodynamics, rate equations, equilibrium constant for homogenous systems, electrode potentials and electrochemical cells).

Inorganic Chemistry (properties of Period 3 elements and their oxides, transition metals, reactions of ions in aqueous solution).

Organic Chemistry (optical isomerism, aldehydes and ketones, carboxylic acids and derivatives, aromatic chemistry, amines, polymers, amino acids, proteins and DNA, organic synthesis, NMR spectroscopy, chromatography).

Assessment

As with Physics and Biology, Chemistry is taught as a linear course that is assessed by examinations in June at the end of Year 13.

Paper 1: Physical Chemistry and Inorganic Chemistry, including relevant practical skills.

Examination - 2 hours
35% of the overall A Level Marks

Paper 2: Physical Chemistry and Organic Chemistry, including relevant practical skills.

Examination - 2 hours 35% of the overall A Level Marks

Paper 3: Any content and any practical skills.

Examination - 2 hours 30% of the overall A Level marks

Paper 3: Topics 1 - 8, including relevant practical skills, critical analysis of given experimental data and one essay question.

Examination - 2 hours 30% of the overall A Level Marks

Is there anything else I should know?

You will develop excellent practical and problem solving skills and the course will prepare you for a wide range of degree courses and careers in Science.

Progression Route

Chemistry is highly regarded and considered a 'facilitating subject' for the top universities in the country, regardless of the degree that you wish to study. It provides an excellent grounding for those wishing to progress onto Law and other traditional 'humanities' subjects but also for Medicine and Veterinary Science as well as Business or Management.

Chemistry is a good choice for students looking to progress into careers involving Health, Research or Industry. These may include professions such as Medicine, Dentistry, Veterinary Science, Education, Forensic Science, Biochemistry, Chemical Engineering, Pharmaceutical Research and Development.

Entry Requirements

Grade 6 in Chemistry/ 6-6 Combined Science. Grade 4 in Maths.

Candidates at A level who achieve a grade E or above have the above requirements, plus a grade 6 in at least 2-3 more related subjects at GCSE.

You must have 5 qualifications at level 2 at grade 4/pass or above.

D&T (Fashion & Textiles)

A Level

Level 3

The A Level course is focused towards fashion and textiles products and accessories in a range of applications; their analysis in respect of materials, process, trends and use in relation to industrial and commercial practices of fashion and textiles. You will design a range of products in Year 12 to meet identified consumer needs, including a bag, a garment, and a range of textiles products and accessories. During this course you will build upon and develop your knowledge and understanding from GCSE whilst also having the freedom to focus in more depth on areas of design and technology that most interest you during Year 13.

Assessment

A Level

During the two year course you will develop a technical understanding of how products function and how they are made to appropriately support the design and manufacture of your own design solutions. You will learn about wider design principles and the effect of design on users and the world we live in. You will identify market needs and opportunities for new products, initiate and develop design solutions, and make and test prototypes/products. You will develop your subject knowledge, including how a product can be developed through the stages of prototyping, realisation and commercial manufacture. This subject also requires you to apply mathematical and scientific knowledge.

A Level Assessment

Unit 1: Coursework

Topic: Iterative Design Project

Weighting: 50% of A Level

In Year 13 you will commence a non-examined 'Iterative Design Project', a substantial design, make and evaluate project centred on the iterative processes of explore, create and evaluate. It is worth 50% of the A Level qualification. You will be required to identify a design opportunity or problem from a context of your own choice, and create a chronological portfolio supported by real-time evidence of your project development. In the first year of this course you will take part in a range of design and make activities and projects to build on your designing and manufacturing skills in preparation for your A Level coursework project which commences following the Easter holidays in Year 12.

Unit 2: Written Exam

Topic: Principles of Fashion & Textiles

Weighting: 26.7% of A Level

Exam – 1 hour 30 minutes

The 'Principles' examination paper is worth 26.7% (80 marks) of the A Level qualification and assesses analysis of existing products, technical knowledge and understanding of materials, product functionality, manufacturing processes and techniques and allows you to demonstrate your understanding of design thinking and wider social, moral and environmental issues that impact on the design and manufacturing industries.

Unit 3: Written Exam

Topic: Problem Solving

Weighting: 23.3% of A Level

Exam – 1 hour 45 minutes

The 'Problem Solving' paper is worth 23.3% (70 marks) of the A Level qualification and requires learners to apply their knowledge and understanding through higher level thinking skills, reflecting on the viability of products and possible design solutions in context and being able to make critical judgements on the most appropriate methods and outcomes.

Is there anything else I should know?

If you want to follow a career or higher education route in Textiles, Fashion Design or Interior Design you may also consider Art & Design and ICT as companion A Levels. If you are wishing to follow a career or higher education route in Fashion Merchandising and Buying, you might also consider Business Studies, Mathematics and ICT as companion Level 3 courses. Media Studies, Graphics, Business Studies and ICT are suitable courses to choose alongside Textiles if you wish to enter the creative advertising and marketing profession.

Progression Routes

Success in this course can lead to higher education qualifications and a number of exciting careers in Textile Design, Clothes/ Fashion Design, Interior Design or Fashion Merchandising and Buying. You could also apply this A Level to your portfolio of skills as a teacher.

Entry Requirements

Grade 4 in Art GCSE. It may be possible to study Art without GCSE however you will be required to share examples of your work and this will be assessed.

You must have 5 qualifications at level 2 at grade 4/pass or above.

D&T (Food Science & Nutrition)

Diploma

WJEC 3

This subject is offered as a L3 Diploma course over two years.

An understanding of food science and nutrition is relevant to many industries and job roles. Care providers and nutritionists in hospitals use this knowledge, as do sports coaches and fitness instructors. Hotels and restaurants, food manufacturers and government agencies also use this understanding to develop menus, food products and policies that support healthy eating initiatives. The course is designed to give students an opportunity to explore these areas looking at how they are evolving and adapting to meet current demands. Many employment opportunities within the field of food science and nutrition are available to graduates.

The course has been designed to offer exciting, interesting experiences that focus learning through application, i.e. through the acquisition of knowledge and understanding in purposeful, work-related contexts, linked to a variety of industries. The course teaches students about health needs and dietary planning for individuals alongside the scientific knowledge of each of the nutrients. They learn how to experiment with food, how to serve safe food to consumers and who needs what food and why it is important to them.

The practical element of the course gives students the opportunity to develop their time management and organisational skills whilst applying their learning to a vocational context. They will develop personal skills and attitudes essential for successful performance at university and in working life.

How is the course structured?

The WJEC Level 3 Diploma in Food Science and Nutrition is a two year course with content broken down into units. To successfully complete the course, you must complete a minimum of 360 Guided Learning Hours (GLH). Students must complete the two mandatory and one optional unit.

Units studied over the 2 years:

Unit 1: Meeting Nutritional Needs of Specific Groups (m).

Unit 2: Ensuring Food is Safe to Eat (m).

Unit 3: Experimenting to Solve Food Production Problems (o).

Unit 4: Current Issues in Food Science and Nutrition (o).

Assessment

The WJEC Level 3 Diploma in Food Science and Nutrition is assessed through a combination of internal and external assessment.

Unit 1: Meeting Nutritional Needs of Specific Groups will be both internally and externally assessed and is worth 50% of the overall course.

Students will sit a 90 minute exam at the end of Year 12, which is a combination of short, extended and case study related questions. This unit is also internally assessed through a summative controlled assessment.

Unit 2: Ensuring Food is Safe to Eat is also externally assessed and is worth 25% of the course. This is an eight hour timed, supervised assessment completed in Year 13.

Unit 3: Experimenting to Solve Food Production Problems and Unit 4: Current issues in Food Science and Nutrition, both optional units, are also internally assessed through a summative controlled assessment completed in Year 13. Internal and external assessment will be completed to PASS, MERIT, DISTINCTION or DISTINCTION* level. Each individual assignment must be completed to at least a pass level in order to pass the whole unit. On successful completion of a unit, points are awarded depending upon the level of completion. At the end of the course, the points will be added from all units to make a combined total points score.

Overall PASS - Equivalent to E grade.
Overall MERIT - Equivalent to C grade.
Overall DISTINCTION - Equivalent to A grade.
Overall DISTINCTION* - Equivalent to A* grade.

Is there anything else I should know?

The WJEC Level 3 Diploma in Food Science and Nutrition can be studied with a variety of other subjects to suit the needs of the student; popular course combinations include Business Studies, Chemistry, Health and Social Care and Physical Education; it is widely accepted by universities and during the UCAS application process.

Progression Routes

The food, health and sport industries are major employers in the UK - highly competitive and challenging sectors offering a wealth of employment opportunities. This course covers a wide range of units which allows students to follow pathways of interest to their future career. Progression routes into further training and higher education are wide ranging; many students who study Food Science and Nutrition continue their studies at university. The Level 3 course is excellent preparation for entering courses such as Events Management, Nutrition and Health Studies, Dietetics, Consumer Science and Health Promotion.

Entry Requirements

Ideally you will have a grade 4 in English Language. You must have 5 qualifications at level 2 at grade 4/pass or above.

D&T Graphics (Product Design)

A Level

Level 3

This subject is offered as an A Level course over two years.

This A Level course is focused towards Graphic products and their applications; you will learn about materials, components, and marketability to understand their selection and uses in industrial and commercial practices of product development. You will design a range of products in Year 12 to meet identified consumer needs, including toys, jewellery, hand held products and architectural models. During this course you will build upon and develop your knowledge and understanding from GCSE whilst also having the freedom to focus in more depth on areas of design and technology that most interest you during Year 13.

How is the course structured?

During the two year course, you will study a range of materials including timbers, metals, plastics and paper boards. You will develop a technical understanding of how products function and how they are made to appropriately support the design and manufacture of your own design solutions. You will learn about wider design principles and the effect of design on users and the world we live in. You will identify market needs and opportunities for new products, initiate and develop design solutions, and make and test prototypes/products. You will develop your subject knowledge, including how a product can be developed through the stages of prototyping, realisation and commercial manufacture. This subject also requires you to apply mathematical and scientific knowledge, understanding and skills.

A Level Assessment

Unit 1: Coursework

Topic: Iterative Design Project

Weighting: 50% of A Level

In Year 13 you will commence a non-examined 'Iterative Design Project', a substantial design, make and evaluate project centred on the iterative processes of explore, create and evaluate. It is worth 50% of the A Level qualification. You will be required to identify a design opportunity or problem from a context of your own choice, and create a chronological portfolio supported by real-time evidence of your project development. Innovative approaches will be required resulting in a final prototype that can be tested against the user and the market.

In the first year of this course you will take part in a range of design and make activities and projects to build on you designing and manufacturing skills in preparation for your A Level coursework project which commences following the Easter holidays in Year 12.

Unit 2: Written Exam

Topic: Principles of Product Design

Weighting: 26.7% of A Level

Exam – 1 hour 30 minutes

The 'Principles' examination paper is worth 26.7% (80 marks) of the A Level qualification and assesses analysis of existing products, technical knowledge and understanding of materials, product functionality, manufacturing processes and techniques and allows you to demonstrate your understanding of design thinking and wider social, moral and environmental issues that impact on the design and manufacturing industries.

Unit 3: Written Exam

Topic: Problem Solving

Weighting: 23.3% of A Level

Exam – 1 hour 45 minutes

The 'Problem Solving' paper is worth 23.3% (70 marks) of the A Level qualification and requires learners to apply their knowledge and understanding through higher level thinking skills, reflecting on the viability of products and possible design solutions in context and being able to make critical judgements on the most appropriate methods and outcomes.

Is there anything else I should know?

For candidates wishing to study Product Design, Graphic Design or Illustration at higher education the desirable subjects to choose along with Design & Technology are Art & Design, Media, Mathematics, Science (Applied), Physics, Business Studies and ICT. However, other combinations are acceptable depending on the type of higher education establishment

Progression Routes

Success in this course can lead to higher education qualifications and careers in Product Design, Graphic Design, Illustration, Animation, Industrial Design, Computer Aided Design, Architectural Design Technology, Mechanical and Aeronautical Engineering as well as other creative, design and engineering disciplines.

Entry Requirements

Grade 4 in Art GCSE. It may be possible to study Graphics without ArtGCSE however you will be required to share examples of your work and this will be assessed. You must have 5 qualifications at level 2 at grade 4/pass or above.

This subject is offered as an A Level course over two years.

This A Level course is focused towards consumer products and their applications; you will learn about materials, components, and marketability to understand their selection and uses in industrial and commercial practices of product development. You will design a range of products in Year 12 to meet identified consumer needs, including toys, a lamp, hand held products and architectural models. During this course you will build upon and develop your knowledge and understanding from GCSE whilst also having the freedom to focus in more depth on areas of design and technology that most interest you during Year 13.

How is the course structured?

During the two year course, you will study a range of materials including timbers, metals, plastics and paper boards. You will develop a technical understanding of how products function and how they are made to appropriately support the design and manufacture of your own design solutions. You will learn about wider design principles and the effect of design on users and the world we live in. You will identify market needs and opportunities for new products, initiate and develop design solutions, and make and test prototypes/products. You will develop your subject knowledge, including how a product can be developed through the stages of prototyping, realisation and commercial manufacture. This subject also requires you to apply mathematical and scientific knowledge, understanding and skills.

Success in this course can lead to higher education qualifications and careers in Product Design, Graphic Design, Industrial Design, Computer Aided Design, Architectural Design Technology, Mechanical and Aeronautical Engineering as well as other creative, design and engineering disciplines.

A Level

Unit 1: Coursework

Topic: Iterative Design Project | Weighting: 50% of A Level
In Year 13 you will commence a non-examined 'Iterative Design Project', a substantial design, make and evaluate project centred on the iterative processes of explore, create and evaluate. It is worth 50% of the A Level qualification. You will be required to identify a design opportunity or problem from a context of your own choice, and create a chronological portfolio supported by real-time evidence of your project development. Innovative approaches will be required resulting in a final prototype that can be tested against the user and the market. In the first year of this course you will take part in a range of design and make activities and projects to build on you designing and manufacturing skills in preparation for your

A Level coursework project which commences following the Easter holidays in Year 12.

Unit 2: Written Exam

Topic: Principles of Product Design

Weighting: 26.7% of A Level

Exam – 1 hour 30 minutes

The 'Principles' examination paper is worth 26.7% (80 marks) of the A Level qualification and assesses analysis of existing products, technical knowledge and understanding of materials, product functionality, manufacturing processes and techniques and allows you to demonstrate your understanding of design thinking and wider social, moral and environmental issues that impact on the design and manufacturing industries.

Unit 3: Written Exam

Topic: Problem Solving | Weighting: 23.3% of A Level

Exam – 1 hour 45 minutes

The 'Problem Solving' paper is worth 23.3% (70 marks) of the A Level qualification and requires learners to apply their knowledge and understanding through higher level thinking skills, reflecting on the viability of products and possible design solutions in context and being able to make critical judgements on the most appropriate methods and outcomes.

Is there anything else I should know?

For candidates wishing to study Product Design or Industrial Design at higher education the desirable subjects to choose along with Product Design are Art & Design, Mathematics, Science (Applied), Physics, Business Studies and ICT. However, other combinations are acceptable depending on the type of higher education establishment.

Progression Routes

Success in this course can lead to higher education qualifications and careers in Product Design, Graphic Design, Industrial Design, Computer Aided Design, Architectural Design Technology, Mechanical and Aeronautical Engineering as well as other creative, design and engineering disciplines.

Entry Requirements

Grade 4 in Product Design recommendation from HOD based on observation of practical and written work.
Candidates at A level who achieve a grade E or above have the above requirements, plus other qualifications at grades 5/6.
You must have 5 qualifications at level 2 at grade 4/pass or above.

English Combined

A Level

Level 3

This subject is offered as an A Level course over two years.

Do you enjoy reading and writing independently, away from your college studies? Above everything else, this is the sign that you will enjoy and be successful at A Level English, whether you choose Literature or Language and Literature Combined.

On this course you will combine the study of literary texts with the study of language and linguistic techniques to better understand how writers construct and convey meaning and how in turn readers develop an understanding of a text. You will create your own writing pieces, but also you will read and write about some classic works of literature. If you love to read and enjoy producing your own writing then this course will allow you to showcase your abilities at the same time as experiencing texts across a wide range of genres.

Assessment Objectives

- **AO1** - Apply concepts and methods from integrated linguistic and literary study as appropriate, using associated terminology and coherent written expression.
- **AO2** - Analyse ways in which meanings are shaped in texts.
- **AO3** - Demonstrate understanding of the significance and influence of the contexts in which texts are produced and received.
- **AO4** - Explore connections across texts, informed by linguistic and literary concepts and methods.
- **AO5** - Demonstrate expertise and creativity in the use of English to communicate in different ways. This course has no AS component – it is a two year programme of study culminating in three A Level examinations and the submission of a coursework portfolio.

A Level

Examination 80% Non-exam assessment 20%

The components comprise a comparative analysis of poetry and an unseen text and the critical response to prose. Students will also study drama texts including a Shakespeare play. This course also develops student engagement with spoken language and non-literary materials.

The non-exam assessment enables pupils to pursue an independent line of enquiry investigating language usage within a particular text or genre.

Is there anything else I should know?

The skills that you will learn in this subject, such as independent research, close reading, analysis and evaluation of material and assimilation of material into a formal essay are desirable skills for universities. English (Combined) therefore is an ideal companion to History, Spanish/French, Psychology, Religious Studies or any of the Science subjects.

Progression Routes

Obviously English Combined will be appropriate for students who wish to progress to study a form of English at university. It also provides many of the skills desirable for degrees in History, Law, Anthropology, Criminology or Teaching.

Entry Requirements

Grade 5, but ideally a Grade 6 in English Language. Candidates at A level who achieve a grade E or above have the above requirements, plus a grade 6 in at least 2-3 more related subjects at GCSE. You must have 5 qualifications at level 2 at grade 4/pass or above.

English Literature

A Level

Level 3

This subject is offered as an A Level course over two years.

On this course you will study some fantastic plays, novels and poetry, ranging in period. You must be willing to undertake independent reading, which should not really feel like a chore, more a pleasure. A qualification in English Literature proves that you are highly motivated, analytical and confident in your ability to construct and convey an argument in both spoken and written form.

Assessment Objectives

- **AO1** - Articulate informed, personal and creative responses to literary texts, using associated concepts and terminology and coherent, accurate written expression.
- **AO2** - Analyse ways in which meanings are shaped in literary texts.
- **AO3** - Demonstrate understanding of the significance and influence of the contexts in which literary texts are written and received.
- **AO4** - Explore connections across literary texts.
- **AO5** - Explore literary texts informed by different interpretations.

This course has no AS component – it is a two year programme of study culminating in three A Level examinations and the submission of a coursework portfolio.

A Level

Examination 80% Non-exam assessment 20%.

The components comprise a study of prose, poetry and drama including Shakespeare from a range of periods. Students are encouraged to study texts using a variety of reading strategies and perspectives and debate and challenge the perspectives of other readers as they develop their own informed personal response to texts. The exam will assess the ability to explore central literary themes and also respond to unseen material.

The non-exam assessment offers the opportunity to independently study and research two prose texts. Students will develop the skills needed to produce a coherent and convincing argument and use literary terminology with confidence.

Is there anything else I should know?

The skills that you will learn in this subject, such as independent research, close reading, analysis and evaluation of material and assimilation of material into a formal essay are highly desirable skills for universities.

English Literature therefore is an ideal companion to History, Spanish/French, Psychology, Religious Studies or any of the Science subjects.

Progression Routes

English Literature is highly regarded and considered a 'facilitating subject' for the top universities in the country, regardless of the degree that you wish to study. It provides an excellent grounding for those wishing to progress onto Law and other traditionally 'humanities' subjects but also for Medicine and Veterinary Science as well as Business or Management.

Entry Requirements

Grade 5, but ideally a Grade 6 in English Literature. Candidates at A level who achieve a grade E or above have the above requirements, plus a grade 6 in at least 2-3 more related subjects at GCSE. You must have 5 qualifications at level 2 at grade 4/pass or above.

Geography

A Level

Level 3

This subject is offered as an A Level course over two years.

Geography is the study of physical and human environments and how they interact together. It is delivered in the two disciplines of Physical and Human Geography and deals with a range of current topical global issues. A level geography builds on what is covered at GCSE Level and applies a range of detailed contemporary case studies to core geographical concepts. You will study the systems, patterns and processes that happen in both urban and rural areas. The content includes studying volcanoes, earthquakes and our changing coastline. Why is Africa the poorest continent on earth? Can Liverpool ever reclaim its status as the 'second city' of Great Britain? How will climate change impact upon your life? Without Geography we stand little chance of answering such questions.

Assessment

You are encouraged to:

- Develop and apply your understanding of geographical concepts and processes to understand and interpret the changing world.
- Develop your awareness of the complexity of interactions within and between societies, economies, culture and environments at a local and global scale.
- Develop as global citizens who recognise the challenge of sustainability and the implications for their own lives and lives of others.
- Improve as critical and reflective learners. Awareness of the importance of attitudes and values, including their own.
- Become apt in the use and application of skills and technologies through your geographical studies.
- Be inspired by the world around you, and gain enjoyment and satisfaction from your geographical studies.

Course Content

The course comprises of three examinations. The following content follows a linear pattern and is taught over a two year period. Students will no longer sit AS level and will complete all A Level examinations at the end of their second year.

Component 1: Changing Landscapes and Changing Places (20.5% of qualification).

Section A: Changing coastal landscapes.

Section B: Changing places.

Component 2: Global Systems and Global Governance (27.5% of qualification).

Section A: Global systems (water and carbon cycles). **Section B:** Global governance chance and challenges. **Section C:** 21st Century challenges.

Component 3: Contemporary Themes in Geography (32% of qualification).

Section A: Tectonic hazards.

Section B: Development in the African Context and ecosystems.

Component 4: Independent Investigation (20% of qualification)

- One 3000-4000 word investigation based upon primary and secondary data collection on any of the themes covered to date.

How it's assessed

Component 1: Written exam: 1 hour 45 minutes - all questions are compulsory and vary in length from 2 - 15 marks.

Component 2: Written exam: 2 hours - combination of compulsory and optional questions, these vary in length from 2 - 20 marks.

Component 3: Written exam: 2 hours 15 minutes - combination of compulsory and optional questions, three in total each. Is a 45 mark essay question.

Component 4: Non examination based investigation submitted in school and marked by external moderators.

Is there anything else I should know?

Field trips are an integral part of the geography course at SJP. It is a vital and valuable component of the compulsory phase of every student's school experience. At both AS and A2, field trips are organised to provide an opportunity for students to experience and test theory learnt in the classroom in a variety of locations.

Progression Routes

Geography is highly regarded and considered a 'facilitating subject' for the top universities in the country, regardless of the degree that you wish to study. It provides an excellent grounding for those wishing to progress onto Law and other 'humanities' subjects but also for Medicine and Veterinary Science as well as Business or Management. Previous students have gone on to study Geography at university, as either a science or in the arts faculties. Your skills of data analysis, interpretation and your ability to present logical arguments all match the skills required in today's workplace. Geographers are highly skilled in both literacy and numeracy, and employers recognise the abilities A Level Geographers possess. A geographical background is also official in the

Entry Requirements

Grade 5, but ideally a Grade 6 in Geography.

Candidates at A level who achieve a grade E or above have the above requirements, plus a grade 6 in at least 2-3 more related subjects at GCSE.

You must have 5 qualifications at level 2 at grade 4/pass or above.

Health & Social Care

BTEC

Level 3

Edexcel BTEC Extended Certificate is equivalent to one A Level

Are you a good communicator? Do you care about other people and how our society develops? Are you interested in pursuing a career working with children, older people or in the NHS? Health and Social Care can give you these opportunities.

It is a natural progression from the GCSE in Health & Social Care and is designed to further develop you into an independent learner.

Throughout the course you will study a variety of topics and build upon your knowledge and understanding of the world of Health, Social Care and Early Years. The nature of the course not only gives you the opportunity to develop your knowledge and understanding, it also allows you to improve your research and application skills, organisational skills and time management. You will develop personal skills and attitudes essential for successful performance at university and in working life.

How is the course structured?

The BTEC Level 3 in Health & Social Care is run over two years and content is broken down into four units, with two being externally assessed. The size of each unit is determined by how many guided learning hours (GLH) have been allocated for delivery. To successfully complete the course, you must complete a total of 360 GLH. You must complete the selected four units in order to fulfil the course requirements.

Units studied over the 2 years:

Unit 1: Human Lifespan Development (90 GLH).

Unit 2: Working in Health & Social Care (120 GLH).

Unit 5: Meeting Individual Care and Support Needs (90 GLH).

Unit 14: Physiological Disorders and their Care (60 GLH).

Assessment

Units 1 and 2 are externally assessed units.

Both Unit 1 and Unit 2 will be a written examination consisting of a 1.5 hours paper each.

All other units are assessed through completion of assignments.

Each of these internally assessed units has a number of tasks to complete in order to fulfil the individual unit requirements. Within assignments, tasks will be completed to PASS, MERIT or DISTINCTION level.

Each individual assignment must be completed to at least a pass level in order to pass the whole unit.

On successful completion of a unit, points are awarded depending upon the level of completion and the size of the unit (GLH). At the end of the course, the points will be added from all four units to make a combined total points score.

Overall PASS - Equivalent to E grade.

Overall MERIT - Equivalent to C grade.

Overall DISTINCTION - Equivalent to A grade. Overall DISTINCTION* - Equivalent to A* grade.

Is there anything else I should know?

The Edexcel BTEC Level 3 in Health & Social Care can be studied with a variety of other subjects to suit the needs of the student. Many students combine with Psychology, Sociology and English. It is widely accepted by universities and during the UCAS application process, students will need to provide details on attainment/ expected attainment within individual units.

Progression Routes

Many students who study Health & Social Care go on to university to study Nursing, Midwifery, Social Work and Teaching. The Level 3 course is excellent preparation for entering university or going directly into Social Care/Early Years employment.

Entry Requirements

Ideally you will have a grade 4 in English Language.

You must have 5 qualifications at level 2 at grade 4/pass or above.

This subject is offered as an A Level course over two years.

The History course is intended to develop powers of reasoning, analysis and expression and to promote a thorough understanding of modern societies. As a subject, History is very well respected by both universities and employers. Studying History helps you to understand more fully the issues and events which make the headlines today: Why are there still Nazis in Germany today? Why is the Health Service so difficult to fund? Why is there a crisis in the Middle East?

Without an understanding of History such questions have little chance of being understood or resolved. It is a subject which will help you to understand people and their attitudes, beliefs and behaviour. As part of the course there are many opportunities to take part in a variety of trips and visits, including conferences in London and international study tours to destinations such as Germany and Poland.

Assessment

History is assessed through a mixture of examinations and coursework. Students will complete two units in each year of study, three of these will be assessed through examinations and the fourth through an independent study and coursework piece of 4000 words.

All examinations will be sat at the end of the two year course in summer 2023.

Students will be expected to complete both essay based questions as well as analysis of historical interpretations in all examination papers. The independent study will be completed in the form of a 4000 word assignment.

These two units will then be re-examined at A Level standard along with Paper 3 in the summer of Year 13.

Over the two year course topics will include:

Paper 1: Germany 1918-89.

Paper 2: Spain, 1930-78: republicanism, Francoism and the re-establishment of democracy.

Paper 3: Rebellion and disorder under the Tudors 1485-1603.
Coursework: Interpretations of American Civil Rights.

Is there anything else I should know?

History would be an ideal choice in combination with a variety of arts and humanities subjects such as English, Literature, Sociology, Religious Studies and Geography as well as demonstrating breadth of knowledge and understanding to universities and employers if the rest of your subjects are science or maths based.

Progression Routes

History is highly regarded and considered a 'facilitating subject' for the top universities in the country, regardless of the degree that you wish to study. It provides an excellent grounding for those wishing to progress onto Law and other 'humanities' subjects but also for Medicine and Veterinary Science as well as Business or Management.

A Level History can lead to further study of the subject at degree level and provides an ideal foundation for careers in areas such as Journalism, Law, Politics, Education, the Civil/Diplomatic Service or indeed any profession which requires analytical ability or the skill of presenting a coherent argument.

Entry Requirements

Grade 5, but ideally a Grade 6 in History.

Candidates at A level who achieve a grade E or above have the above requirements, plus a grade 6 in at least 2-3 more related subjects at GCSE.

You must have 5 qualifications at level 2 at grade 4/pass or above.

This Subject is equivalent to one A Level.

The new BTEC Nationals 2016 course has been developed in collaboration with employers and representatives from higher education and relevant professional bodies. It ensures that the content is up to date and includes the knowledge, understanding, skills and attributes required in the IT sector.

How will my work be assessed?

There are a total of four units (three mandatory and one optional). Two of the units are internally assessed and worth 42% of the overall grade. Two units are externally assessed and worth 58% of the overall grade.

Candidates must achieve four units over two years in order to gain the full award; equivalent to one A Level.

The course also provides the flexibility of completing two of the core units in one year equivalent to 0.5 A Levels.

The units from this qualification are graded as Pass, Merit or Distinction. The total of each unit will determine the overall grade for the course.

The overall grade equivalents are detailed below:

PASS - Equivalent to E grade.

MERIT - Equivalent to C grade.

DISTINCTION - Equivalent to A grade.

DISTINCTION * - Equivalent to A* grade.

Unit 1: Information Technology Systems (33%)

This is a mandatory unit that is externally assessed by an unseen paper-based examination. You will explore the relationships between the hardware and software that form an IT system, and the way that systems work individually and together, as well as the relationship between the user and the system. You will examine issues related to the use of IT systems and the impact that they have on organisations and individuals. In this unit you will draw on your learning from across your programme to complete assessment tasks. This unit will give you a fundamental and synoptic understanding of all areas of IT, supporting your progression to an IT-related higher education course.

Unit 2: Creating Systems to Manage Information (25%)

This is a mandatory unit that is externally assessed under supervised conditions. You will study the design, creation, testing and evaluation of a relational database system to manage information. You will examine the structure of data and its origins, and how an efficient data design follows through to an effective and useful database. You will examine a given scenario and develop an effective design solution to produce a database system. You will then test your solution to ensure that it works correctly.

Finally, you will evaluate each stage of the development process and the effectiveness of your database solution.

Unit 3: Social Media in Business (25%)

This is a mandatory unit that is internally assessed. You will explore different social media websites, the ways in which they can be used and the potential pitfalls when using them for business purposes. You will develop a plan to use social media strategies for business purposes to achieve specific aims and objectives. You will then implement the plan, developing and posting content and interacting with others. Finally, you will collect data on the businesses use of social media and review the effectiveness of your efforts.

Unit 6: Website Development (17%)

This is an optional unit that is internally assessed. In this unit, you will review existing websites – commenting on their overall design and effectiveness. You will use scripting languages such as Hypertext Mark-up Language (HTML), Cascading Style Sheets (CSS) and JavaScript® and a simple text editor, or rapid application development tools. Finally, you will reflect on the website design and functionality using a testing and review process.

Is there anything else I should know?

The new BTEC Level 3 Nationals in ICT have been designed to accredit candidates' achievement in a modern and practical way that is relevant to the workplace. There is no requirement for candidates to have achieved a Level 2 ICT qualification before progressing to this award.

Progression Routes

Employment in an ICT related role - for example Supervisory or Management Trainee; entry to college or university for further study; work towards work-related and vocational qualifications.

Entry Requirements

Ideally you will have a grade 4 in Maths/English Language. You must have 5 qualifications at level 2 at grade 4/pass or above.

The Edexcel BTEC Level 3 Extended Certificate in Computing is equivalent to one A Level.

It is a natural progression from the study of Computing at GCSE and is designed to further develop you into an independent learner.

Throughout the course you will study a variety of topics and build upon your knowledge and understanding of the world of Computing. The nature of the course not only gives you the opportunity to develop your knowledge and understanding, but it also allows you to improve your organisational skills, time management and the ability to apply learning to a vocational context. You will develop personal skills and attitudes essential for successful performance at university and in working life.

How will my work be assessed?

There are a total of four units (three mandatory and one optional). Two of the units are internally assessed and worth 42% of the overall grade. Two units are externally assessed and worth 58% of the overall grade.

Candidates must achieve four units over two years in order to gain the full award equivalent to one A Level. The course also provides the flexibility of completing two of the core units in one year equivalent to 0.5 A Levels.

The units from this qualification are graded as Pass, Merit or Distinction. The total of each unit will determine the overall grade for the course.

The overall grade equivalents are detailed below:

PASS - Equivalent to E grade.

MERIT - Equivalent to C grade.

DISTINCTION - Equivalent to A grade.

DISTINCTION * - Equivalent to A* grade.

Unit 1: Principles of Computer Science (33%)

This is mandatory unit that is externally assessed. In this unit, you will explore the logical and structured ways that computer systems process data to develop programs, processes and systems that solve specific problems. You will examine the features of effective computer programming and apply accepted computing and programming paradigms. You will analyse, develop and evaluate algorithms and computer code, and propose and apply solutions to ensure that computer systems are fit for purpose.

Unit 2: Fundamentals of Computer Systems (25%)

This is mandatory unit that is externally assessed. In this unit, you will explore the relationship between hardware and software as part of a computer system. You will examine the way computer components work both individually and together to store and process data, and the way in which data is transmitted and used in computer systems. You will explore the impact that computing systems have on organisations and individuals.

Unit 7: IT Systems Security and Encryption (25%)

This is mandatory unit that is internally assessed. In this unit, you will investigate the many different types of security attack, the vulnerabilities that exist and techniques that can be used to defend the IT systems of organisations. Many organisations run complex IT networks and need them to be secure while providing a safe environment for their employees to work, sharing some data and keeping other data private. You will learn about the complexities of configuring and supporting these networks. You will also explore how encryption can be used to protect data.

Unit 15: Website Development (17%)

This is an optional unit that is internally assessed. In this unit, you will review existing websites – commenting on their overall design and effectiveness. You will use scripting languages such as Hypertext Mark-up Language (HTML), Cascading Style Sheets (CSS) and JavaScript® and a simple text editor, or rapid application development tools. Finally, you will reflect on the website design and functionality using a testing and review process.

Is there anything else I should know?

The Edexcel BTEC Level 3 in Computing can be studied with a variety of other subjects to suit the needs of the student. It has been designed to accredit candidates' achievement in a modern and practical way that is relevant to the workplace. It is widely accepted by universities and during the UCAS application process; students will need to provide details on attainment/ expected attainment within individual units.

Entry Requirements

Ideally you will have a grade 4 in Maths/English Language. You must have 5 qualifications at level 2 at grade 4/pass or above.

Are you a linguist? Are you a good communicator? Do you enjoy travelling to new places? Are you interested in people and other cultures? Then you should be considering studying Mandarin to A Level! More and more universities are asking for a language qualification for their courses, irrespective of your chosen career path.

In addition to lessons with your teacher each week you will have extra conversation classes with a native Mandarin speaker to improve your accent and the style of your spoken Mandarin. You will take advantage of the instant access to authentic materials that the internet affords us and use your language in real life situations.

Through the A level route you will develop and refine your listening, speaking, reading and writing skills as well as revising and building on the grammar already learnt at GCSE to improve the complexity and fluency of your language. In addition you will learn about the culture of China and the life of people in China.

You will also study literature and cinema from China. : A pigeon called Feng, a short story by Cao Wenxuan; And 'Please vote for me' directed by Chen Wenjun.

A Level - two year qualification

Exams taken at the end of Year 13

Paper 1: 40% Listening, Reading and Translation into English and into Mandarin.

Paper 2: 30% Essays on both books or book and film studied.

Paper 3: 30% Speaking exam on an individual research project (21-23 minutes).

Progression Routes

Mandarin is highly regarded and considered a 'facilitating subject' for the top universities in the country, regardless of the degree that you wish to study. It provides an excellent grounding for those wishing to progress onto Law and other 'humanities' subjects but also for Medicine and Veterinary Science as well as Business or Management. The Advanced GCE in Mandarin can lead to further study of languages at degree level and can easily be combined with other courses such as Law, English, Business, International Studies or other languages that can be taken up at university such as Japanese. Current popular career choices for students of languages include Translation and Interpreting, Business, Journalism, Computing, Law, Publishing, Marketing, as well as Teaching, both in the UK and abroad. Linguists are sought after employees for many types of Business and Industry.

Entry Requirements

Grade 6 in Mandarin. Candidates at A level who achieve a grade E or above have the above requirements, plus a grade 6 in at least 2-3 more related subjects at GCSE. You must have 5 qualifications at level 2 at grade 4/pass or above.

Mathematics

A Level

Level 3

Do you enjoy a challenge and want an A Level that is highly regarded by universities and employers alike? To study Mathematics at advanced level you must have a determination to succeed and a passion for successfully solving problems. The course is based on Edexcel Mathematics. There are three areas of study for the exam – Pure Mathematics, Statistics and Mechanics.

The focus of the Pure Mathematics aspect is to further develop elements of the mathematics that you will have explored at GCSE. It will be a continuation of work on topics such as solving quadratic equations, factorising, sketching curves, vectors and trigonometry. You will also extend your mathematical knowledge further by learning how to differentiate and integrate; fundamental to Calculus.

Statistics explores some of the handling data GCSE topics that you have already seen, but to a further level. You will complete calculations that will help you better explore the spread of data, correlation shown on scatter graphs and whether hypothesis are deemed to be plausible.

Mechanics is the study of motion. It looks at the way that a physical body moves when subjected to a force. Much of the work is based around Newton's three laws of motion.

Statistics and Mechanics allow you to apply Mathematics to real life scenarios.

Assessment

A2

3 exams:

Paper 1: Pure Mathematics - Written examination: 2 hours, 33.33% of the qualification, 100 marks.

Paper 2: Pure Mathematics - Written examination: 2 hours, 33.33% of the qualification, 100 marks.

Paper 1 and 2 content: Proof, Algebra and functions, Coordinate geometry in the (x, y) plane, Sequences and series, Trigonometry, Exponentials and logarithms, Differentiation, Integration, Numerical methods, Vectors.

Paper 3: Statistics and Mechanics - Written examination: 2 hours, 33.33% of the qualification, 100 marks.

Paper 3 content: Section A (Statistics) - Statistical sampling, Data presentation and interpretation, Probability, Statistical distribution, Statistical hypothesis testing.

Section B (Mechanics) - Quantities and units in mechanics, Kinematics, Forces and Newton's laws, Moments.

For A Level Mathematics students must complete all assessment in May/June in any single year.

Is there anything else I should know?

The exam board recommend the Casio fx991-EX. This can be purchased through the school in order to get the best price. There is no coursework in A Level Mathematics.

Progression Routes

Mathematics is highly regarded and considered a 'facilitating subject' for the top universities in the country, regardless of the degree that you wish to study. It provides an excellent grounding for those wishing to progress onto Law and other 'humanities' subjects but also for Medicine and Veterinary Science as well as Business or Management. Mathematics A Level is an essential requirement for many mathematics and science based courses at degree level. It is also a highly regarded and valuable qualification for a wide range of professions including Engineering, Computing, Economics, Accountancy and Actuarial work and is a suitable qualification for undergraduate courses in subjects such as Psychology, Law, Medicine and Business & Management Studies.

Entry Requirements

Grade 6 in Maths. Candidates at A level who achieve a grade E or above have the above requirements, plus a grade 6 in at least 2-3 more related subjects at GCSE. You must have 5 qualifications at level 2 at grade 4/pass or above.

Further Maths

A Level

Level 3

Further Mathematics is an A Level qualification which both broadens and deepens the mathematics covered in A level Mathematics. It is designed to be learnt alongside AS Level Mathematics in Year 12.

Any student planning to take a mathematics-rich degree (this covers a very wide range of academic areas - Engineering, Sciences, Computing, Finance/Economics, etc, as well as Mathematics itself) will benefit enormously from taking Further Mathematics. Students who are not planning to study for mathematics-rich degrees but who are keen on mathematics will find Further Mathematics a very enjoyable course and having a Further Mathematics Qualification identifies students as having excellent analytical skills, whatever area they plan to study or work within.

Further Mathematics introduces new topics such as matrices and complex numbers that are vital in many mathematics-rich degrees. Students who have studied Further Mathematics find the transition to such degrees far more straightforward. Studying Further Mathematics should also boost your performance in A Level Mathematics. To study Further Mathematics at advanced level you must be studying A Level Mathematics, and should have the very top grades from GCSE Mathematics.

The course is based on the Edexcel Further Maths A Level. You will study three areas of mathematics if you choose to take Further Maths. These are currently Pure Mathematics (compulsory), Mechanics and Statistics however there are also options to study Further Pure Mathematics or Decision Mathematics. These options are decided by the Mathematics department each year based on the cohort.

Assessment

A2

Four exams;

Paper 1: – Core Pure Mathematics 1: Written examination - 1 hour and 30 minutes, 25% of the 3 qualification, 75 marks.

Paper 2: – Core Pure Mathematics 2: Written examination - 1 hour and 30 minutes, 25% of the qualification, 75 marks. Paper 1: and 2 content: Proof, Complex numbers, Matrices, Further algebra and functions, Further calculus, Further vectors, Polar coordinates, Hyperbolic functions, Differential equations.

Paper 3: - Further Statistics 1: Written examination - 1 hour and 30 minutes, 25% of the qualification, 75 marks.

Paper 3 content: Probability distributions, Hypothesis testing, Chi squared tests, Central Limit Theorem, Probability generating functions, Quality of tests.

Paper 4: – Further Mechanics 1: Written examination: 1 hour and 30 minutes, 25% of the qualification, 75 marks.

Paper 4 content: Momentum and impulse, Work, energy and power, Elastic collisions in one and two dimensions, Elastic strings and springs and elastic energy.

For A Level Further Mathematics students must complete all assessment in May/June in any single year.

Is there anything else I should know?

You should only be choosing AS Further Mathematics if you are also taking AS Mathematics and have a deep love of Mathematics as it will be 2/3s of your A-levels. A calculator may be used in all examinations. The exam board recommend the Casio fx991-EX. This can be purchased through the school in order to get the best price. There is no coursework in A Level Further Mathematics.

Progression Routes

Further Mathematics qualifications are highly regarded and are strongly welcomed by universities. Students who take Further Mathematics are really demonstrating a strong commitment to their studies, as well as learning mathematics that is very useful for any mathematics-rich degree.

Entry Requirements

Grade 7 in Maths and choose Maths A Level.

Candidates at A level who achieve a grade E or above have the above requirements, plus a grade 6 in at least 2-3 more related subjects at GCSE.

You must have 5 qualifications at level 2 at grade 4/pass or above.

BTEC Tech Award in Creative Media Production.

This course is equivalent to one GCSE.

What will I learn about?

Component 1: Exploring Media Products

This unit aims to allow learners to understand about the sector and investigate media products across the following sub-sectors:

- audio/moving image (TV programmes, films, video shorts, animations, radio broadcasts)
- publishing (newspapers, magazines, books, e-magazines, comics)
- interactive (websites, mobile applications, mobile games, video games, online games).

During Component 1, students will explore:

- content and purpose of digital media products
- style and the use of digital design principles
- idea generation and the production process
- industry regulations and professional practices.

Component 2: Developing digital media production skills

By completing this component, learners will develop technical skills and techniques in the chosen discipline(s) of audio/moving image, publishing and interactive.

During Component 2, students will:

- experiment with a variety of media production skills and techniques
- apply the technical skills that they learn
- reflect on their progress and use of skills, as well as how they could improve.

Component 3: Create a media product in response to a brief

By completing this component, learners will apply digital skills and techniques by responding to a digital media brief.

To do this, students will:

- learn how to respond to a media brief
- plan their response to the brief
- apply skills and techniques to a production
- justify the process and outcome that they have developed
- reflect on their application of skills, time management and use of resources.

How is the course structured?

BTEC Tech Award in Creative Media Production is a one year course and content is broken down into components. Each component is worth a specific amount of points and

to successfully complete the course, pupils must complete each component to the required minimum standard. Pupils must complete the mandatory three components in order to achieve the required amount of points.

How will my work be assessed?

Two of the three components are assessed internally with one component being externally assessed.

Each component has a number of assignments to complete in order to fulfil the individual component requirements.

Within assignments, tasks will be completed to PASS, MERIT or DISTINCTION level. Each individual assignment must be completed to the minimum required standard in order to pass the whole component. All assignment tasks contribute to the completion of the course.

On successful completion of a component, points are awarded depending upon the level of completion and the size of the unit. At the end of the course, the points will be added from all three components to make a combined total points score.

Overall Level 2 PASS - C grade.

Overall Level 2 MERIT - B grade.

Overall Level 2 DISTINCTION - A grade.

Overall Level 2 DISTINCTION * - A* grade.

What can this qualification lead to?

With a BTEC Tech Award in Creative Media Production, students are able to explore, challenge and realise their potential. During the course, students can see whether the industry is one they want to be in, where they could go, and gain the knowledge and skills they need to succeed in their next steps.

After completing the course, students can continue on to further vocational and academic study at level 2 and level 3, as well as apprenticeships and traineeships.

Possible university and career pathways:

- Digital Media
- Media Production
- Media and Communications Journalism and
- Media Digital Marketing

Entry Requirements

You must have a positive attitude towards learning.

Media & Film Studies

A Level

Level 3

This subject is offered as an A Level course.

Media Studies is designed to enhance your enjoyment, understanding and appreciation of the media and its role in your daily life. The course introduces you both to media ideas and the practice of production, which gives you the chance to develop a real understanding of media platforms, the contemporary media landscape and the influential role of the media in today's society. This course helps you develop these relationships with the media. As a consumer you'll become more aware of the many ways in which media messages are presented to us, as well as discovering how the institutions which produce and distribute media products are trying to reach you. Using the most up to date technology, utilising the capabilities of Apple iMacs and associated software, you will create work of a professional standard that will showcase your technical and creative capabilities.

Assessment

01: Media messages (35% of total A level) 2 hour written examination.

Section A: News and Online Media

This section consists of two linked in-depth studies that focus on contemporary news in the UK, requiring you to explore how and why newspapers and their online counterparts are evolving as media products and the relationship between both online and offline news.

Section B: Media Language and Representation

You will explore media language and representation, through media products set by OCR in the following media forms - magazines, advertising and marketing and music videos.

02: Evolving media (35% of total A Level) 2 hour written examination.

Section A: Media Industries and Audiences

You will explore media industries and audiences, through media products set by OCR for – radio, video games and film.

Section B: Long Form Television Drama

You will engage in one in-depth study of television as an evolving, global media form. You must study one complete episode of a contemporary English language long form TV drama and one complete episode of a non-English language long form TV drama to inform your study.

Non-Exam Assessment: Making media (30% of total A Level)
You will create a cross-media product in response to an OCR set brief relating to TV, music video, magazine, radio or film.

Is there anything else I should know?

Media Studies is for you if you want a course which balances examination and coursework production, if you want to develop your creative and technical skills in media production and if you already enjoy analysing and discussing media you have watched or read. You don't have to have studied Media Studies at GCSE level to be able to succeed at A Level. The course is designed to integrate students who are new to the subject as well as those who have studied previously.

Progression Routes

Media Studies naturally leads to careers in journalism, marketing, advertising or public relations. Awareness of how the world of media works can also support other careers, such as social work, law and education. By knowing how the media operates you'll be able to interpret information more skilfully, and engage with topics that interest you. Students work individually as well as in groups which is attractive to employers as it demonstrates a focus for work as well as social skills required to work with others. Students studying Media Studies will also be using industry standard software on Apple iMacs to equip them appropriately for a variety of careers within the Media industry as well as other design and/or ICT based jobs.

Entry Requirements

Ideally you will have a grade 4 in English Language.
You must have 5 qualifications at level 2 at grade 4/pass or above.

Media & Film Studies

BTEC

Level 3

The BTEC Level 3 National Extended Certificate in Creative Digital Media Production is equivalent to one A Level.

Do you have a genuine interest in Media? Are you interested in pursuing a career related to Media Production, Advertising or Journalism?

Achievement of this qualification can support you to go on and study in a Higher Education Institution either on relevant Media degrees such as Digital Media, Media Production, Media and Communications, Journalism and Media or Digital Marketing or to support progression on to other degree courses.

How is the course structured?

The BTEC Level 3 National Extended Certificate in Creative Digital Media Production is run over two years and content is broken down into four units, with two being externally assessed. The size of each unit is determined by how many guided learning hours (GLH) have been set for delivery and to successfully complete the course, you must complete a total of 360 GLH. You must complete the selected four units in order to fulfil the course requirements. Each unit has a specific vocational context in order to allow students to relate their studies to the working environment.

Units studied over the two years:

Unit 1: Media Representations (90 GLH).

Unit 4: Pre-production Portfolio (90 GLH).

Unit 8: Responding to a Commission (120 GLH).

Unit 10: Film Production - Fiction (60 GLH).

Assessment

Units 1 and 8 are externally assessed units.

Unit 1: will be a two-hour, on screen exam set and marked by Pearson worth 80 marks with assessment available in January and May/June. In this unit, you will study a range of media from different sectors, such as music videos, short film extracts, animation, news programmes, websites, digital games and print adverts in order to explore how meaning, messages and values are constructed through formal and stylistic elements.

Unit 8: will be a task set and marked by Pearson and completed under supervised conditions. You will be provided with a commission for a media production two weeks before the supervised assessment period. The set task is completed in 6 hours under supervised conditions in a period timetabled by Pearson. Assessment will be available in Dec/Jan and May/June. In this unit, you will understand how to respond to a commission brief with ideas based on the required content, style, audience, purpose and approach proposed by the client. You will work within the requirements and constraints of the client's specifications and consider your response in terms of ethos, format, budget, platform and duration.

All assessment for units 4 and 10 is made through completion of assignments and coursework. Each of these internally assessed units has a number of assignments to complete in order to fulfil the individual unit requirements. Within assignments, tasks will be completed to PASS, MERIT or DISTINCTION level. Each individual assignment must be completed to at least a pass level in order to pass the whole unit.

Unit 4: You will study the requirements of planning and delivering a digital media product, carrying out essential pre-production tasks and creating a pre-production portfolio.

Unit 10: This unit will focus on the process of producing a short narrative film or film extract that uses generic conventions.

On successful completion of a unit, points are awarded depending upon the level of completion and the size of the unit (GLH). At the end of the course, the points will be added from all four units to make a combined total points score.

Overall PASS - Equivalent to E grade.

Overall MERIT - Equivalent to C grade.

Overall DISTINCTION - Equivalent to A grade.

Overall DISTINCTION* - Equivalent to A* grade.

Is there anything else I should know?

The BTEC Level 3 National Extended Certificate in Creative Digital Media Production can be studied with a variety of other subjects to suit the needs of the student. It is supported by universities and employers within the media sector. During the UCAS application process; students will need to provide details on attainment/expected attainment within individual units.

Progression Routes

The BTEC Level 3 National Extended Certificate in Creative Digital Media Production contains units which provide the breadth of knowledge, understanding and skills to prepare you for further study in this sector. The Level 3 course is excellent preparation for entering university courses such as Digital Media, Media Production, Media and Communications, Journalism and Media or Digital Marketing. It can also prepare you for employment in the digital media sector in job roles such as digital layout artists, assistant animators, production runners or freelance crew or for a media-related apprenticeship.

Entry Requirements

Ideally you will have a grade 4 in English Language. You must have 5 qualifications at level 2 at grade 4/pass or above.

This subject is a BTEC Level 3 National Extended Certificate in Music Performance.

This two year course gives musicians the chance to develop their musical skills beyond GCSE level. It is designed to support progression to higher education when taken as part of a programme of study that includes other appropriate BTEC Nationals or A Levels. The programme gives a broad overview of the sector, with a focus on performance, including musical skills development and professional practice.

There will be a mixture of written and practical work and regular recording events to present coursework both in and out of school time. The language and traditions of music from many cultures is studied, as well as examples from a huge range of styles.

How is the course structured?

The course is run over two years and content is broken down into 4 units. Each unit is worth a specific amount of credits and to successfully complete the course, you must complete the selected units in order to achieve the required amount of credits. Each assignment has a specific vocational context and a scenario in order to allow students to relate their studies to the industry.

The 4 units are:

- Professional Practice in the Music Industry – an externally assessed unit that explores what it is that makes someone a professional in the music industry and how to put forward a bid for work.
- Practical Music Theory and Harmony – an internally assessed unit that develops the learners' knowledge and understanding of music theory and harmony, and apply their understanding in practical scenarios.
- Ensemble Music Performance – an externally assessed unit to work as part of a musical ensemble and develop their skills and techniques in rehearsal and performance.
- Music Performance Session Styles – an internally assessed unit exploring the styles of music encountered in the role of a modern session musician.

Assessment

All assessment is made through completion of assignments and coursework as well as formal written and performance exams at the end of the second year. Each unit has an assignment to complete in order to fulfil the individual unit requirements. Within assignments, tasks will be completed to PASS, MERIT or DISTINCTION level.

Each individual assignment must be completed to at least a pass level in order to pass the whole unit.

On successful completion of a unit, points are awarded depending upon the level of completion and the credit value of the unit. At the end of the course, the points will be added from all completed units to make a combined total points score.

Is there anything else I should know?

Due to the course content it is advisable to have studied Music; however, promising musicians who have a good standard of performance but have not studied the subject in Year 11 should talk to the Music staff about their suitability for the course.

Progression Routes

The qualification can provide the UCAS points required to allow access to higher education courses including degrees and foundation degrees. Potential occupations include opportunities in teaching, promotions, performance, publishing, music therapy and the media.

Entry Requirements

Ideally you will have a grade 4 in English Language. You must have 5 qualifications at level 2 at grade 4/pass or above.

Performing Arts

BTEC

Level 3

This course is a BTEC Level 3 Extended Certificate in Performing Arts, equivalent to one A Level.

Spread over two years, the Performing Arts course covers a wide spectrum of performance based units in order for learners to experience every medium of drama and theatre.

Learners will develop the technical and interpretative skills necessary to work in many areas of the performing arts. Learners will explore the means and processes of characterisation, interpret texts, develop performance material for performance through rehearsal as well as participating in presenting live performances of the rehearsed material. Although the emphasis is on practical work, the course does contain elements of both theory and written work.

Assessment

Assessment is carried out over the two years of the course through practical drama sessions, written projects, presentations, essays and performances. There are two externally assessed units as part of the course. You will have the opportunity to discuss possibilities for pathways through two core units plus two Specialist Units.

Units of Work:

Unit 1: Investigating Practitioner's work.

This is an externally assessed unit. Learners investigate the work of performing arts practitioners and develop critical analysis skills and contextual understanding of how practitioners communicate themes in their work. In this unit, you will develop skills that allow you to investigate the work of influential performing arts practitioners. Additionally, you will draw on your learning from across your programme to complete assessment tasks.

Unit 2: Developing Skills and Techniques for Live Performance.

Learners will explore technical performance skills with a focus on developing techniques in at least two performances. This unit serves as an induction into the performing arts where you will develop the appropriate skills and techniques in one or more of the performance disciplines of acting, dance, musical theatre, physical theatre and variety/popular entertainment.

Unit 3: Group Workshop Performance.

This is the second externally assessed unit of the BTEC course. Learners explore and integrate creative, physical and vocal skills and techniques, working collaboratively to create a performance in response to a given stimulus. In this unit, you will learn how to respond to a given stimulus as part of a group, using research, discussion and practical exploration to develop performance material and later present an informal presentation of the work to an invited audience.

Unit 19: Acting Skills. Learners develop acting methods by exploring different acting styles.

This unit will introduce you to the basic differences of a range of styles of theatre and the approaches of theatre practitioners. You will take part in workshops that explore acting styles, techniques and practices used by different theatre practitioners in their work. This will enable you to create character, interpret lines and develop your vocal and physical skills while rehearsing and performing a text or devising original work.

Assignments must be completed for each unit, within set deadlines. On completing this award pupils will be awarded either a Pass, Merit or Distinction grade. All units must be completed and passed in order to achieve the final award.

Progression Routes

The Performing Arts course is an excellent preparation for the further study of Drama or Acting at Drama School or university, as well as for a wide range of other related areas within the Theatre Industry. Further employment opportunities include teaching, acting, theatre, drama therapy and the media.

Entry Requirements

Ideally you will have a grade 4 in English Language. You must have 5 qualifications at level 2 at grade 4/pass or above.

Physical Education

BTEC

Level 3

The Edexcel BTEC Level 3 National Extended Certificate in Sport is equivalent to one A Level.

It is a natural progression from the Edexcel BTEC Level 2 First Award in Sport and is designed to further develop you into an independent learner. Throughout the course you will study a variety of topics and build upon your knowledge and understanding of the world of sport. The nature of the course not only gives you the opportunity to develop your knowledge and understanding of aspects of sport but it also allows you to improve your organisational skills, time management and the ability to apply learning to a vocational context. You will develop personal skills and attitudes essential for successful performance at university and in working life.

How is the course structured?

The BTEC Level 3 in Sport is run over two years and content is broken down into units. There are four units and each unit is worth a specific amount of points depending on its size. To successfully complete the course you must complete all four units. Two of the units are externally assessed and the other two units are internally assessed. You must complete all units to at least pass level to gain the qualification overall.

Units studied over the two years

Unit 1: Anatomy and Physiology in Sport (120 GLH).

Unit 2: Fitness Testing and Programming for Health, Sport and Wellbeing (120 GLH).

Unit 3: Professional Development in the Sports Industry (60 GLH).

Unit 4: Sports Leadership (60 GLH).

Assessment

There are three methods by which this course will be assessed:

Unit 1: A written examination set and marked by the examining body

Unit 2: A written task set and marked by the examining body.

Unit 2 and 3: An assignment set and marked internally.

On successful completion of a unit, points are awarded depending upon the level of completion and the size (number of GLH) of the unit. At the end of the course, the points will be added from all four units to make a combined total points score.

Overall PASS - Equivalent to E grade (16 UCAS points).

Overall MERIT - Equivalent to C grade (32 UCAS points)

Overall DISTINCTION - Equivalent to A grade. (48 UCAS points)

Overall DISTINCTION * - Equivalent to A* grade. (56 UCAS points)

Is there anything else I should know?

The Edexcel BTEC Level 3 in Sport can be studied with a variety of other subjects to suit the needs of the student. It is widely accepted by universities and during the UCAS application process; students will need to provide details on attainment/expected attainment within individual units.

Is there anything else I should know?

Many students who study PE continue their sporting studies at university. The Level 3 course is excellent preparation for entering university courses such as Sports Science, Physiotherapy, Sports Development, Sports Coaching and PE Teaching.

Entry Requirements

Ideally you will have a strength in Science.

You must have 5 qualifications at level 2 at grade 4/pass or above.

You will gain an awareness of the on-going development of new ideas in physics and of the application of in-depth knowledge of well-established topics such as electricity. Particle physics introduces you to the fundamental properties and nature of matter, radiation and quantum phenomena. In contrast, the study of electricity builds on and develops previous GCSE knowledge and understanding and provides opportunities for practical work and looks into important applications. You will also explore the mechanics, materials and waves that builds on the knowledge and skills gained at GCSE.

At A Level you will further develop skills and understanding of mechanics and complement this with topics relating to magnetic and electrical fields that naturally leads into studying capacitors and how quickly they charge and discharge through resistors.

Course Content

Year 12 Units

1. Particles and Radiation
2. Waves and Optics
3. Mechanics and Materials
4. Electricity

Year 13 Units

6. Further mechanics and thermal physics.
7. Fields and their consequences.
8. Nuclear physics.

Optional Units (only 1 selected)

10. Astrophysics.
11. Medical physics.
12. Engineering physics.
13. Turning points in physics.
14. Electronics.

Assessment

As with Biology and Chemistry, Physics is taught as a linear course that is assessed by examinations in June.

Paper 1: Sections 1-5 and 6.1, 2 hours, 85 marks, 34% of A-Level. 60 short and long answer questions split by topic. 25 multiple choice questions.

Paper 2: Sections 7.8 & 6.2 with assumed knowledge from sections 1-5. 2 hours, 85 marks, 34% of A-Level. 60 short and long answer questions split by topic. 25 multiple choice questions.

Paper 3: Practical skills, data analysis and option module. 2 hours, 80 marks, 32% of A-Level. 45 marks of short and long answer questions on practical skills and data analysis.

Progression Routes

Physics is highly regarded and considered a 'facilitating subject' for the top universities in the country, regardless of the degree that you wish to study. It provides an excellent grounding for those wishing to progress onto Law and other 'humanities' subjects but also for Medicine and Veterinary Science as well as Business or Management.

Physics is a good choice for students looking to progress into careers such as Engineering, Electronics, Education, IT and Software Design, Medicine, Domestic Energy Supply, Dentistry and Veterinary Science.

Entry Requirements

Grade 6 in Physics/6-6 in Combined Science and Maths. Candidates at A level who achieve a grade E or above have the above requirements, plus a grade 6 in at least 2-3 more related subjects at GCSE. You must have 5 qualifications at level 2 at grade 4/pass or above.

Psychology

A Level

Level 3

If you are fascinated by the idea of understanding the brain - if you want to grasp the complexities of human behaviour - A Level Psychology is for you. It is about trying to understand why people think, feel and behave the way they do.

Psychologists ask a diverse range of questions such as: What is personality? How are memories created? How are we influenced by others? How does childhood affect our adult development? Psychology studies the most fascinating of all areas - human behaviour and experience.

This subject is offered as a two year A Level course. In Psychology we take a scientific approach to the study of human behaviour. The goal is to describe, understand, predict and modify behaviour. The course allows you to study theories, research, terminology, concepts, studies and methods as well as to develop skills of analysis, interpretation and evaluation.

Assessment

The subject is 100% exams based and is assessed through three examinations at the end of the year 13. Over the two year course students will learn about a range of psychological topics such as: Social influence: this concerns the changing of human behaviour through obedience and conformity; Memory: this will allow students to understand both short and long term memory; Attachment: students will learn about how attachment is formed alongside theories explaining why attachment is formed; Approaches in Psychology: this will include psychodynamic, cognitive, learning and biological; Psychopathology: this will explain mental disorders such as phobias, depression and OCD; Research Methods: this concerns the process of conducting psychological research such as experiments and observations as well as the analysis and interpretation of data. Students will also have the opportunity to study some psychological topics in more detail, including forensics, eating behaviour, and gender.

Each exam paper is 2 hours long and worth 96 marks.

Paper 1: Introduction to psychology - social influence, memory, attachment and psychopathology.

Paper 2: Psychology in context - approaches, biopsychology and research methods.

Paper 3: Issues and topics in psychology - issues and debates, gender, eating behaviour and forensic psychology.

Progression Routes

The subject combines well with English, Biology, Maths, Sociology, Religious Studies and Philosophy and Ethics. A degree in Psychology offers graduates a wide choice of future employment opportunities such as Teaching, Clinical/Occupational/Developmental/Forensic/Sports Psychologist roles as well as providing valuable transferable skills that can apply to a wide range of occupations.

Entry Requirements

Grade 5 in English Language/Literature. Grade 4/5 in Biology/4-5 Combined Science. Grade 4 in Maths. Candidates at A level who achieve a grade E or above have the above requirements, plus qualifications at grades 5/6. You must have 5 qualifications at level 2 at grade 4/pass or above

Public Services

BTEC

Level 2

Pearson BTEC First Public Services – equivalent to one GCSE

Public Services aims to inspire and enthuse learners to consider a career in the Public Services sector. It gives learners the opportunity to gain broad knowledge and understanding of, and develop skills in, the Public Services sector. This course supports progression into a more specialised Level 3 vocational or academic course or into an apprenticeship and gives learners the potential opportunity, in due course, to enter employment within a wide range of junior job roles across the public service sector, for example entry-level jobs within the armed services or non-uniformed services.

This is an intensive course that delivers the content of one GCSE in one year. It will enable learners to develop a broad and comprehensive understanding of the public services sector.

How is the course structured?

The BTEC Level 2 in Public Services is run over one year and the content is broken down into four units, with one being externally assessed. The size of year unit is determined by how many guided learning hours (GLH) have been allocated for delivery. To successfully complete the course, you must complete a total of 120 GLH. You must complete the selected four units in order to fulfil the course requirements.

Units studied over the 1 year:

Unit 1: The Role and Work of the Public Services (30 GLH)

Unit 2: Working Skills in the Public Service Sector (30 GLH)

Unit 3: Employability in the Public Services (30 GLH)

Unit 4: Public Services and Community Protection (30 GLH)

Assessment

Unit 1 is externally assessed. It is a written examination consisting of one paper lasting 1 hour.

All other units are assessed through the completion of assignments. Each of these internally assessed units has a number of tasks to complete in order to fulfil the individual unit requirements.

Within assignments, tasks will be completed to PASS, MERIT or DISTINCTION level.

Each individual assignment must be completed to at least a PASS level in order to pass the whole unit.

On successful completion of a unit, points are awarded depending upon the level of completion and the size of the unit (GLH). At the end of the course, the points will be added from all four units to make a combined total points score.

Overall PASS – Equivalent to C GCSE grade

Overall MERIT – Equivalent to B GCSE grade

Overall DISTINCTION – Equivalent to A GCSE grade

Overall DISTINCTION* - Equivalent to A* GCSE grade

Entry Requirements

You must have a positive attitude towards learning.

Religious Studies

A Level

Level 3

Religious Studies is the study and analysis of the world and people to understand why they behave as they do and how their approach to the world impacts on their actions.

The beauty of Religious Studies is that it allows for personal reflection, discussion, and the formation of argument and the debating of relevant ethical ideas. Your lessons will allow you to deepen your thoughts and ideas, challenge traditional concepts and arguments and articulate your reasoning and evaluation of moral issues.

This qualification is designed to develop a greater understanding and appreciation of religious beliefs and teachings, as well as the disciplines of ethics and philosophy of religion. You will develop your skills of critical analysis in order to construct balanced, informed arguments and responses to religious, philosophical and ethical ideas.

OCR's A Level Religious Studies course aims to engage you thoroughly and develop an interest in Religious Studies which extends beyond the classroom and can be applied to the world.

How is the Course Structured?

Philosophy of religion – 33.3% of A Level and a 2 hour exam
You will study:

- Ancient philosophical influences
- The nature of the soul, mind and body
- Arguments about the existence or non-existence of God
- The nature and impact of religious experience
- The challenge for religious belief and the problem of evil
- Ideas about the nature of God
- Issues in religious language.

Religion and Ethics - 33.3% of A Level and a 2-hour exam
You will study:

- Normative ethical theories: Natural Moral Law, Kantian Ethics, Utilitarianism and Situation Ethics
- The application of ethical theory to two contemporary issues of importance: Euthanasia and Business Ethics
- Meta Ethics
- Debates surrounding the significant idea of conscience
- Sexual ethics and the influence on ethical thought of developments in religious belief

Developments in Religious Thought - 33.3% of A Level and a 2 hour exam

You will study:

- Augustine's teaching on human nature
- Death and the afterlife
- Knowledge of God's existence
- The person of Jesus Christ
- Christian moral principles
- Christian moral action
- Religious pluralism and theology
- Religious pluralism and society
- Gender and religion
- Gender and society
- The challenge of secularism

Is there anything else I should know?

There is no coursework in Religious Studies.

Religious Studies is designed to teach you analytical and evaluative ability and is therefore useful to study alongside any subject.

Progression Routes

The skills of evaluation and analysis that Religious Studies teaches you is applicable to almost any walk of life. Religious Studies can prepare you for anything that you want to do.

According to AGCAS - the Association of Graduate Careers Advisory Service. RE/Theology graduates go into a wide range of careers. However they, and employers, feel that it particularly prepares students for the following careers:

- Financial Services sector
- Legal sector
- Medicine
- Politics
- Consultancy Journalism
- Media sector
- Education sector
- Publishing sector
- Social Care sector
- Voluntary sector
- Social & Pastoral Care
- Community work

Entry Requirements

Ideally you will have a grade 4 in English Language. You must have 5 qualifications at level 2 at grade 4/pass or above.

Science Applied

BTEC
Level 3

This Edexcel BTEC Level 3 Extended Certificate in Applied Science is equivalent to one A Level.

This course is for students interested in learning about the Applied Science sector alongside other fields of study, with a view to progressing to a wide range of higher education courses. This course can be taken as part of a programme of study that includes other BTEC Nationals or A Levels. An optional unit is also studied to broaden the students' understanding and to support any future career aspirations.

How is the Course Structured?

The BTEC Level 3 Extended Certificate in Applied Science is equivalent to one A Level and is comprised of four units. Three of these units are mandatory:

- Principles and Applications of Science
- Practical Scientific Procedures and Techniques
- Science Investigation Skills

The remaining unit is optional and can be selected from choices such as Genetics and Genetic Engineering or Electrical Circuits and their Application.

Assessment

There are three methods by which this course will be assessed:

- Assignments set and marked internally;
- Tasks set and marked by the examining body;
- Written examinations set and marked by the examining body.

The mandatory Unit 2 and the optional unit are assessed using assignments which are set and marked internally usually involving practical projects. Mandatory Unit 1 is assessed using a written examination, set and marked by the examining body which will require students to recall and apply technical knowledge.

The remaining mandatory Unit 3 is assessed via tasks set and marked by the examining body which will involve applying their learning to 'real life' situations.

The grading of this course ranges from pass through to distinction* which are equivalent to A Level grades and will have a specific number of UCAS points associated with them.

Overall PASS - Equivalent to E grade.

Overall MERIT - Equivalent to C grade.

Overall DISTINCTION - Equivalent to A grade. Overall

DISTINCTION * - Equivalent to A* grade.

Progression Routes

Applied Science is a good choice for students looking to progress into careers such as Nursing, Healthcare, Sport Science, Support Services, Laboratory Technician, assisting with Chemical, Biological and Physical Research, Education and Manufacturing Industries.

Entry Requirements

Ideally you will have a grade 4 in Maths.
You must have 5 qualifications at level 2 at grade 4/pass or above.

Sociology

A Level

Level 3

Sociology examines social behaviour from a variety of perspectives: how it originates and then develops, and the ways people are organised into groups according to distinctions such as class, gender and race. It is a subject which looks at how people lead their lives and how they communicate with one another and integrate and function as members of society. It investigates social areas such as Education, the Family, Crime and Deviance and Religion. An important aspect of the course is Methods in Context, which introduces us to the use of research methods, something which is of great importance in higher education. The study of Sociology leads to the understanding of complex issues and it is a good basis for university level study in all disciplines. If you are interested in evaluating the workings of society and how different groups of people find their place within it, this is the course for you.

Assessment

The subject is 100% exams based and is assessed through three examinations at the end of the year 13. Over the two year course students will study a range of topics which may include: Family: including its changing pattern, roles and government policies; Education: including the hidden curriculum and government policies; Research methods: such as ethical issues and observations;

Theories: such as functionalism, Marxism and feminism; Religion: including secularisation and cults; Crime: including the effects of social class and age.

Some questions will require short answers and students will also be expected to provide longer essay based questions on some of the above topics.

Each exam paper is 2 hours long and worth 80 marks.

Paper 1: Education with theory and methods - Education (50 marks), methods in context (20 marks), theory and methods (10 marks).

Paper 2: Topics in Sociology - Families and households (40 marks) and beliefs in society (40 marks).

Paper 3: Crime and deviance with theory and methods - Crime and deviance (50 marks), theory and methods (30 marks).

Is there anything else I should know?

A Level Sociology combines well with English, History, Psychology and Religious Studies.

Progression Routes

Many students who study Sociology go on to university to study Criminology or Sociology. Both degrees offer graduates a wide choice of future employment opportunities such jobs in Higher Education or in Social Services such as Social Work, Mental Health Nursing, Policing, Counselling and Teaching.

Entry Requirements

Grade 5 in English Language/Literature/History/Philosophy. Candidates at A level who achieve a grade E or above have the above requirements, plus qualifications at grades 5/6. You must have 5 qualifications at level 2 at grade 4/pass or above.

Are you a linguist? Are you a good communicator? Do you enjoy travelling to new places? Are you interested in people and other cultures? Then you should be considering studying Spanish to A Level! More and more universities are asking for a language qualification for their courses, irrespective of your chosen career path.

In addition to lessons with your teachers each week you will have extra conversation classes with a native Spanish speaker to improve your accent and the style of your spoken Spanish. You will take advantage of the instant access to authentic materials that the internet affords us and use your language in real life situations.

Through the A level route you will develop and refine your listening, speaking, reading and writing skills as well as revising and building on the grammar already learnt at GCSE to improve the complexity and fluency of your language. In addition you will learn about the culture of Spain and the life of people in Spain and the Spanish speaking world.

There are four areas of study which are taught at A Level; 'Spanish society and social trends', 'Culture in the Spanish speaking world', 'Immigration and multicultural society' and 'Franco's dictatorship and the move to democracy'. Also you will study literature and cinema from the Spanish speaking world. In Year 12 you will study the film 'Laberinto del Fauno' and in Year 13 you will study the text 'Crónica de una muerte anunciada'.

A Level - two year qualification

Exams taken at the end of Year 13

Paper 1: 40% Listening, Reading and Translation into English and into Spanish.

Paper 2: 30% Essays on both books or book and film studied.

Paper 3: 30% Speaking exam on an individual research project (21-23 minutes).

Progression Routes

Spanish is highly regarded and considered a 'facilitating subject' for the top universities in the country, regardless of the degree that you wish to study. It provides an excellent grounding for those wishing to progress onto Law and other 'humanities' subjects but also for Medicine and Veterinary Science as well as Business or Management. The Advanced GCE in Spanish can lead to further study of languages at degree level and can easily be combined with other courses such as Law, English, Business, International Studies or other languages that can be taken up at university such as Chinese and Japanese. Current popular career choices for students of languages include Translation and Interpreting, Business, Journalism, Computing, Law, Publishing, Marketing, as well as Teaching, both in the UK and abroad. Linguists are sought after employees for many types of Business and Industry.

Entry Requirements

Grade 6 in Spanish. Candidates at A level who achieve a grade E or above have the above requirements, plus a grade 6 in at least 2-3 more related subjects at GCSE. You must have 5 qualifications at level 2 at grade 4/pass or above.

General RE

This is a two year course in Religious & Moral Education

The Key themes that underpin the units of study in General RE are my world and how I see it- my morality and how I live it - my faith and how I grow it. These ideas are a common thread woven through each unit topic which maps on to one or more of the themes. Consequently, the aims of each unit, studied over a two year period, are as follows:

To provide students with the opportunity to reflect upon and develop their own faith position.

Enable students to use a range of skills that will be valuable during their time in school and beyond.

Promote the moral, spiritual, and cultural development of each student.

Explore ethical and religious matters in regards to modern culture.

Provide students with the opportunity to learn about the wider community and other faiths.

Expectations of Students

Successful completion of the course is determined by:

- Regular attendance – Students must be present for every lesson unless they are absent from school due to illness or any other authorised reason. General RE lessons continue as normal during the exam periods.
- Attitude to Lessons – Students are expected to engage actively in lessons through participation in class discussion and group work.
- Written Evidence – Students will be provided with a course booklet which will serve as written evidence that they have successfully completed the course and engaged with the activities designed to reflect their spiritual, moral, cultural and social development.

Course Content

In Years 12 and 13 students will study the following topics:

Thinking Spirituality - Including looking at the importance of spirituality, debate the big questions and research other religions and other world views.

Thinking Morality - Including what morality is and what we consider when we make a moral decision.

Thinking Globally - Including what it means to be a global citizen and the importance and impact of the work of CAFOD.

- ↓ You should make sure you seek advice from a rang of people which could include: Subject Teachers, Form Tutors, Heads of Learning, Learning Coaches, Connexions and Parents/Carers.
- ↓ Make sure you have read the Sixth Form Course Guide carefully.
- ↓ Download a copy of the application form from our website. www.stjohnplessington.com or pick up a copy at our Information Evening.
- ↓ Fill out the application form and hand into our Sixth Form Team.
- ✓ Enrol at the College.

College Tours

If you cannot make it to the Sixth Form Information Evening, please contact the college to arrange a tour of the College.

We believe...

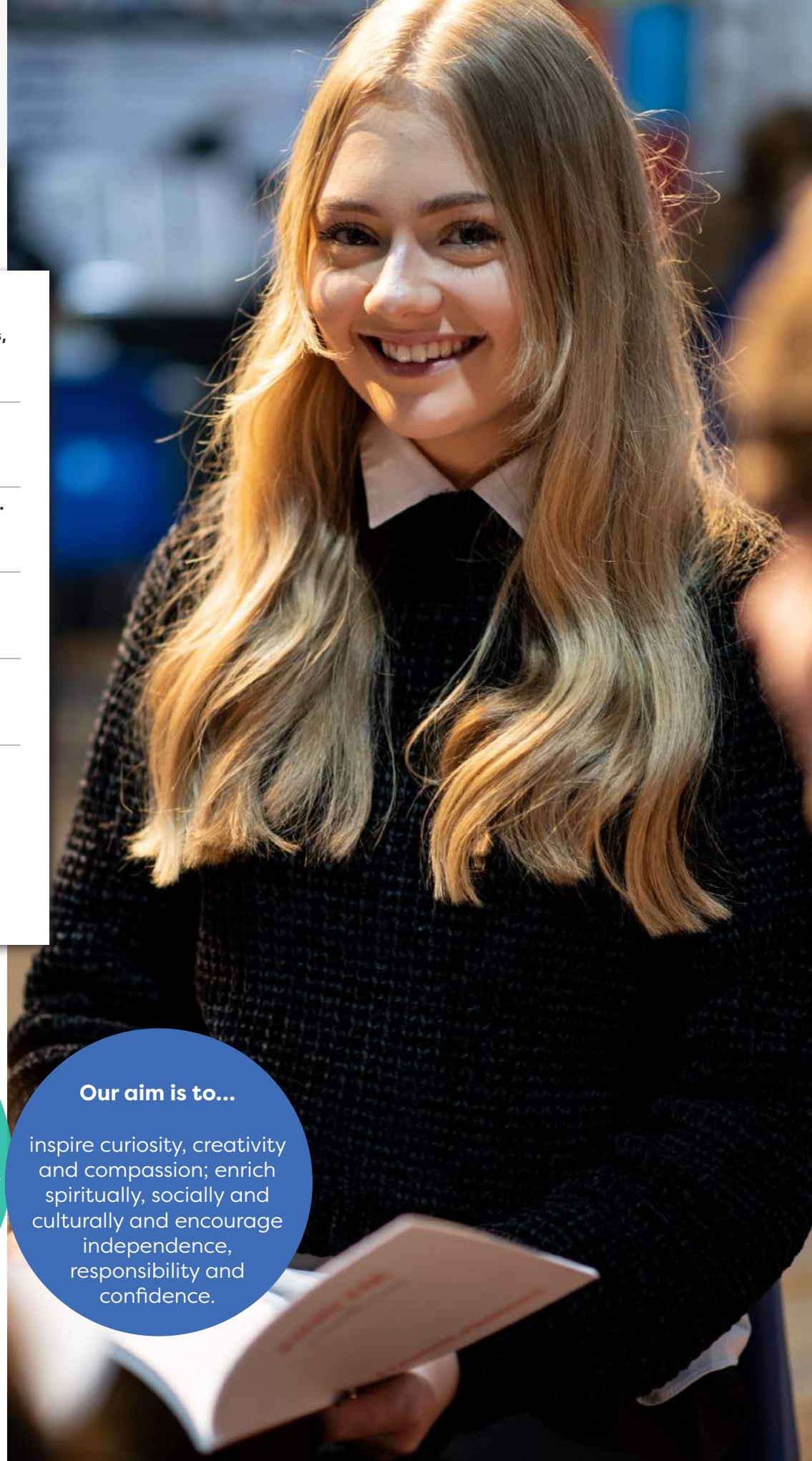
that SJP can offer you the very best education possible, enabling you to achieve your goals and fulfil your ambitions, whatever they may be. You will learn new skills, grow in confidence, become more independent and more fully developed as an individual. Most importantly, you will have had a brilliant time in the process.

You can achieve...

great things through hard work, commitment and dedication. We will offer you outstanding support and guidance during your time with us. Our shared goal is to stimulate and challenge you to use all your gifts positively.

Our aim is to...

inspire curiosity, creativity and compassion; enrich spiritually, socially and culturally and encourage independence, responsibility and confidence.



The purpose of careers advice in the Sixth Form is not to tell students what to do with their lives, but to guide and advise them on the options that are realistically available.

It is the student's responsibility to attend Academic Review and request interviews or attend open days. The Sixth Form staff are able to guide and advise students but it is the responsibility of students to seek out advice and complete their own research.

Application to university begins in the summer term of Year 12. Using the web-based 'Apply' system, students can complete the UCAS form on their own PC at home or online at College. Applications for some courses must be completed by October and early application is beneficial for all courses. Students are expected to do their own research and seek advice from their tutor. University visits are essential. Students not wishing to apply to university are called 'Jobseekers' and a separate programme of support is provided. The careers service takes increasing responsibility for students who are not sure of what to do after completing their exams.

University visits – Open Days

Students who are considering university courses are strongly advised to visit a number of universities. Visits on Open Days or at other times may provide a student with a clear idea of where to go or where not to go. The buildings – campus or not – and, in particular, the location of student accommodation is better experienced first hand.

Each student will usually be allowed a maximum of 3 Open Day visits.

Interview Preparation

Students can request the opportunity to practise their interview technique prior to attending university interviews. Similarly, students seeking employment may request interview preparation training sessions. This should be arranged via the Head of Work Related Learning.

Community Work

The expectation is that all students will complete an hour a week of Community Work. This could be working with staff at SJP mentoring or coaching younger pupils or arranged through an outside agency. Students will be expected to keep a log of the hours they complete for this community work which will provide a useful point of information to include in their reference.

Travel Routes to College

Train Routes

We are fortunate to have a train station on our doorstep. Just follow the Wirral Line to Bebington Station, home of **St John Plessington Sixth Form College**.

Bus Routes

The following dedicated bus routes serve our College;

605 659
625 631

Car Routes

We are 5 minutes from the M53 J4 and 5 minutes from the Birkenhead Tunnel.



Old Chester Road, Bebington, Wirral. CH63 7LF

T 0151 645 5049

E schooloffice@stjohnplessington.com

W stjohnplessington.com

 [@SJPHeadTeacher](https://twitter.com/SJPHeadTeacher)

 [/SJPHeadTeacher](https://www.facebook.com/SJPHeadTeacher)

 [/SJPHeadTeacher](https://www.instagram.com/SJPHeadTeacher)

