



# St John Plessington Catholic College



# Welcome

“ We are really proud of our Sixth Formers and hope that your time with us will be happy and successful ”



As you approach the end of your compulsory education you have many important choices to make with a range of opportunities available to you. The next two years should be some of the best years of your life, providing you with memories to last a lifetime. We are immensely proud of our Sixth Form at SJP – students, tutors and teachers alike - not just for all that they achieve but also for all that they do to contribute to our thriving College community.

We're very excited that the new Sixth Form Centre is due to be completed in the summer term and will provide facilities second to none which will enhance your opportunities for success. Our aim is always to provide students with the opportunity to continue their education in a creative, supportive and challenging environment and to help equip them with the skills and qualities needed to meet the demands and challenges of adult life in the 21st century.

If you are a current student at SJP you will already know that the staff here will go that extra mile for you, but don't be fooled into thinking that Sixth Form life is just "more of the same." Whilst the fundamental ingredients which make us such a successful school are still present, Sixth Form life is very different. You will be given greater privileges and responsibilities, both for your own formation and the well-being of others. You will be taught in smaller groups, have more self-directed study time and will work towards becoming a highly successful, capable and independent learner, ready to tackle the challenges of life after SJP.

Throughout your time with us you will receive the very best pastoral and academic support possible. Sixth Form study has to be challenging and worthwhile, preparing you for life at university and the workplace but it also has to be enjoyable. Those new to the school in Sixth Form are welcomed with open arms, make new friends quickly and benefit from all that SJP has to offer. The Course Guide in this brochure will help you to learn more about the course options available here. We offer a variety of subjects at Level 3 (A Level and equivalent) which means that students are able to build a programme of study to meet their own individual interests and skills. Please choose your options wisely, thinking ahead to the next stage of your journey and take the opportunity to ask questions of the subject staff and Mrs Lock, Director of Sixth Form, if you have any queries. I look forward to welcoming you personally to our Sixth Form.

**Mr T Quinn**  
Executive Head Teacher

- 04 Why choose SJP?
- 05 First Class Facilities
- 06 Basil Hume Sixth Form Centre
- 08 Valuable Enrichment Opportunities
- 09 Spiritual Life
- 10 Life beyond SJP
- 11 School & Voluntary Service
- 12 Monitoring & Guidance
- 14 What happens next?

## Course Details

- 16 Art
- 17 Biology
- 18 Business Studies
- 19 Chemistry
- 20 Design Technology: Graphics (Product Design)
- 21 Design Technology: Hospitality
- 22 Design Technology: Textiles (Product Design)
- 23 English (Combined)
- 24 English Literature
- 25 Extended Project Qualification
- 26 French
- 27 Geography
- 28 Government & Politics
- 29 Health & Social Care (Double Award)
- 31 History
- 32 ICT
- 33 Mathematics
- 34 Further Mathematics
- 35 Media Studies
- 36 Music
- 37 Performing Arts
- 38 Philosophy & Ethics
- 39 Physical Education
- 40 Physics
- 41 Psychology
- 42 Science (Applied)
- 43 Sociology
- 44 Spanish
- 45 World Development
- 46 General RE
- 46 GCSE
- 47 Pathways to your Future



## Contact Information

### College Address

St John Plessington Catholic College  
Old Chester Road, Bebington  
Wirral, CH63 7LF

### Telephone

0151 645 5049

### Fax

0151 643 1516

### General Email

[schooloffice@stjohnplessington.com](mailto:schooloffice@stjohnplessington.com)

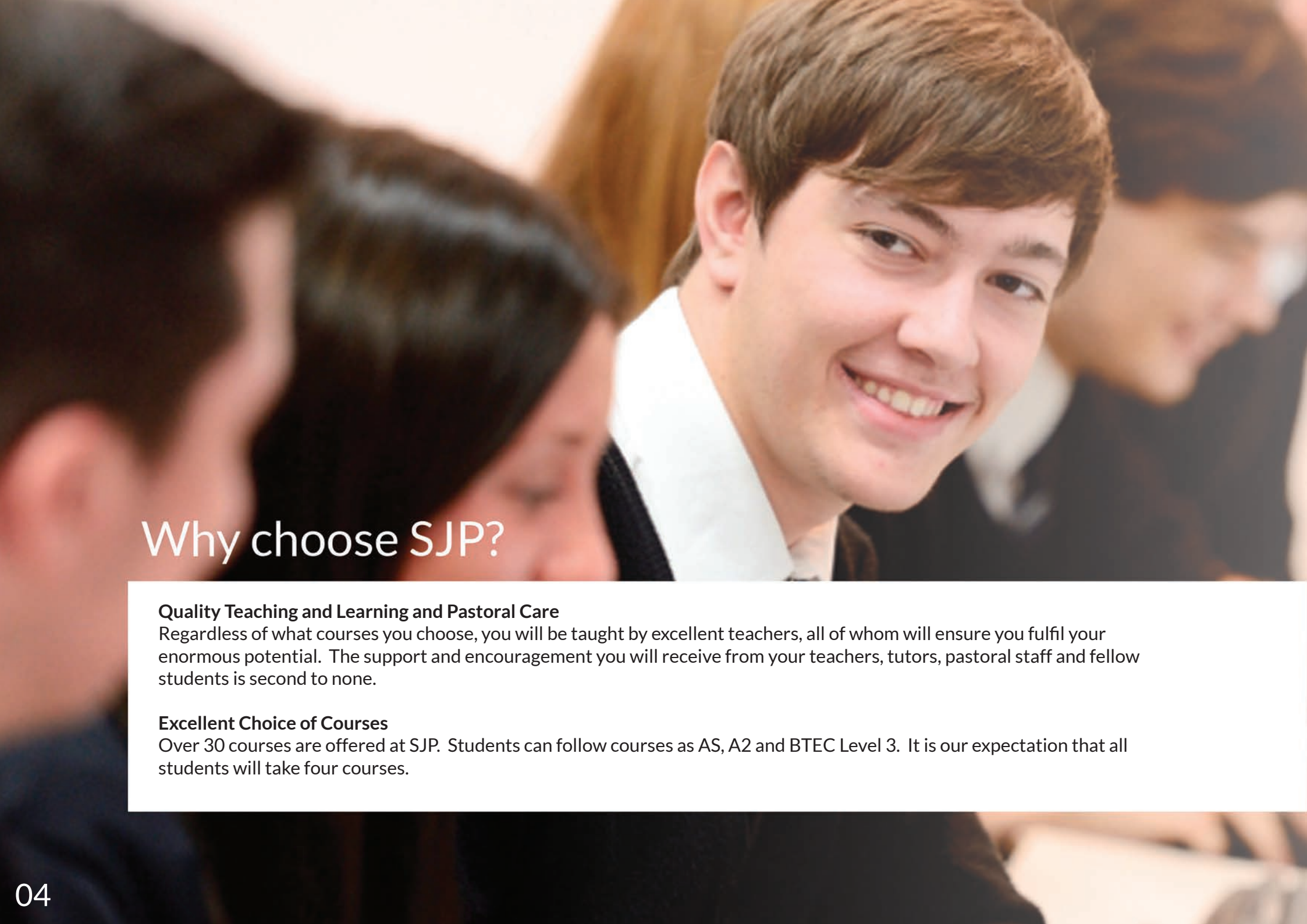
### Website

[www.stjohnplessington.com](http://www.stjohnplessington.com)

### Social Network

[Twitter.com/SJPHeadTeacher](https://twitter.com/SJPHeadTeacher)





## Why choose SJP?

### **Quality Teaching and Learning and Pastoral Care**

Regardless of what courses you choose, you will be taught by excellent teachers, all of whom will ensure you fulfil your enormous potential. The support and encouragement you will receive from your teachers, tutors, pastoral staff and fellow students is second to none.

### **Excellent Choice of Courses**

Over 30 courses are offered at SJP. Students can follow courses as AS, A2 and BTEC Level 3. It is our expectation that all students will take four courses.



## Our Results are Outstanding

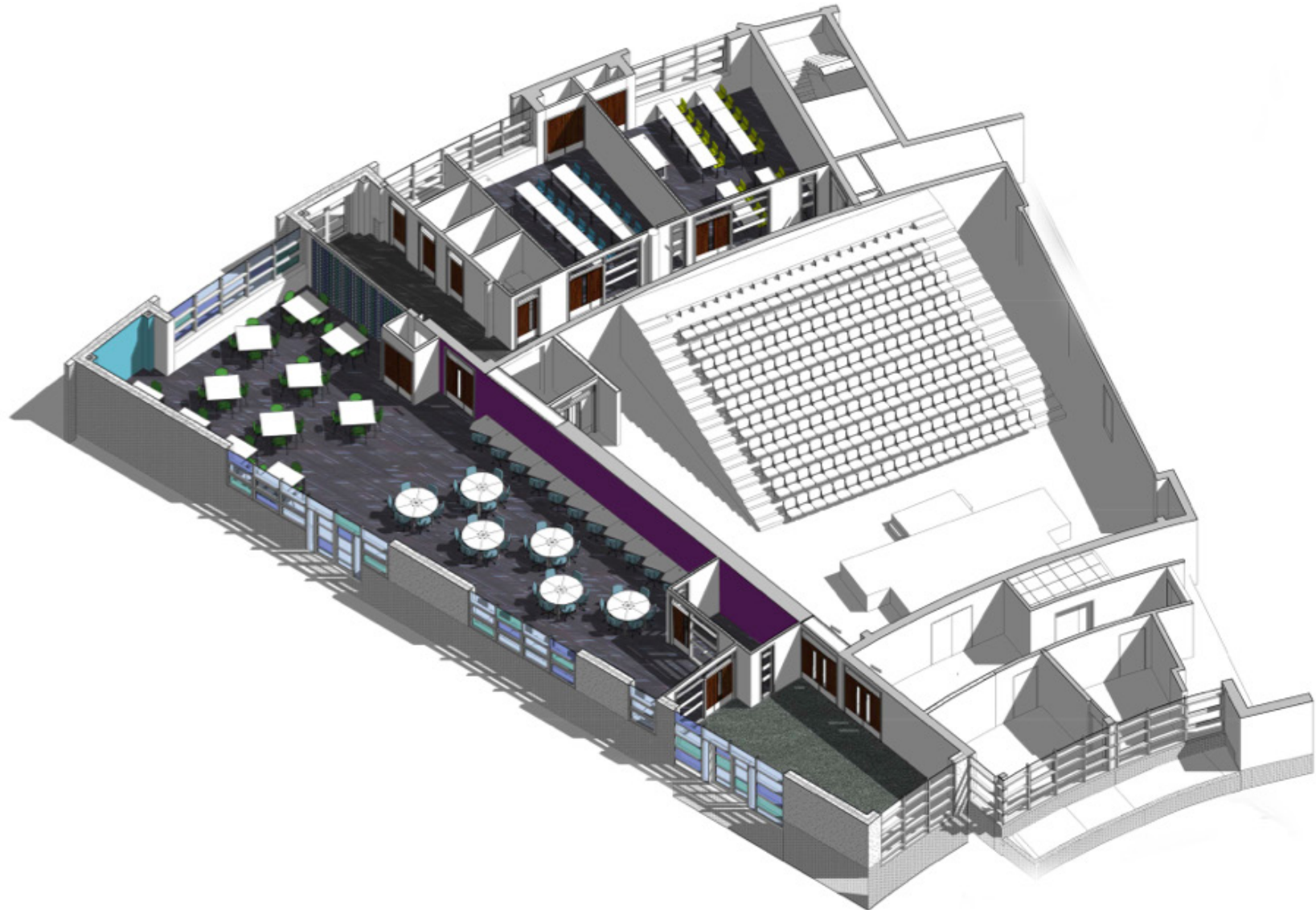
99% of our Sixth Form passed their A Levels in recent years, with an average of 50% of the grades awarded being A or B. These results continue the trend of improvement, as we continually strive to ensure that all our students achieve their aspirational targets.

## First Class Facilities

The Sixth Form have dedicated facilities including our brand new Basil Hume Sixth Form Centre, which will be completed in 2015. This state-of-the-art facility will house fully-networked computer and study suites, specialised Sixth Form teaching rooms and dedicated outdoor areas. In addition, the Sixth Form Zone is a more relaxed environment, with comfortable seating. The facilities in this area include a breakfast bar style area, equipped with Wi-Fi access, with an outdoor decking area where students can eat and socialise. All classrooms are furnished with the latest in educational technology. In addition, Sixth Form students have access to the library throughout the day which houses computers and multi-media resources.

# Basil Hume Sixth Form Centre, Ground Floor

---

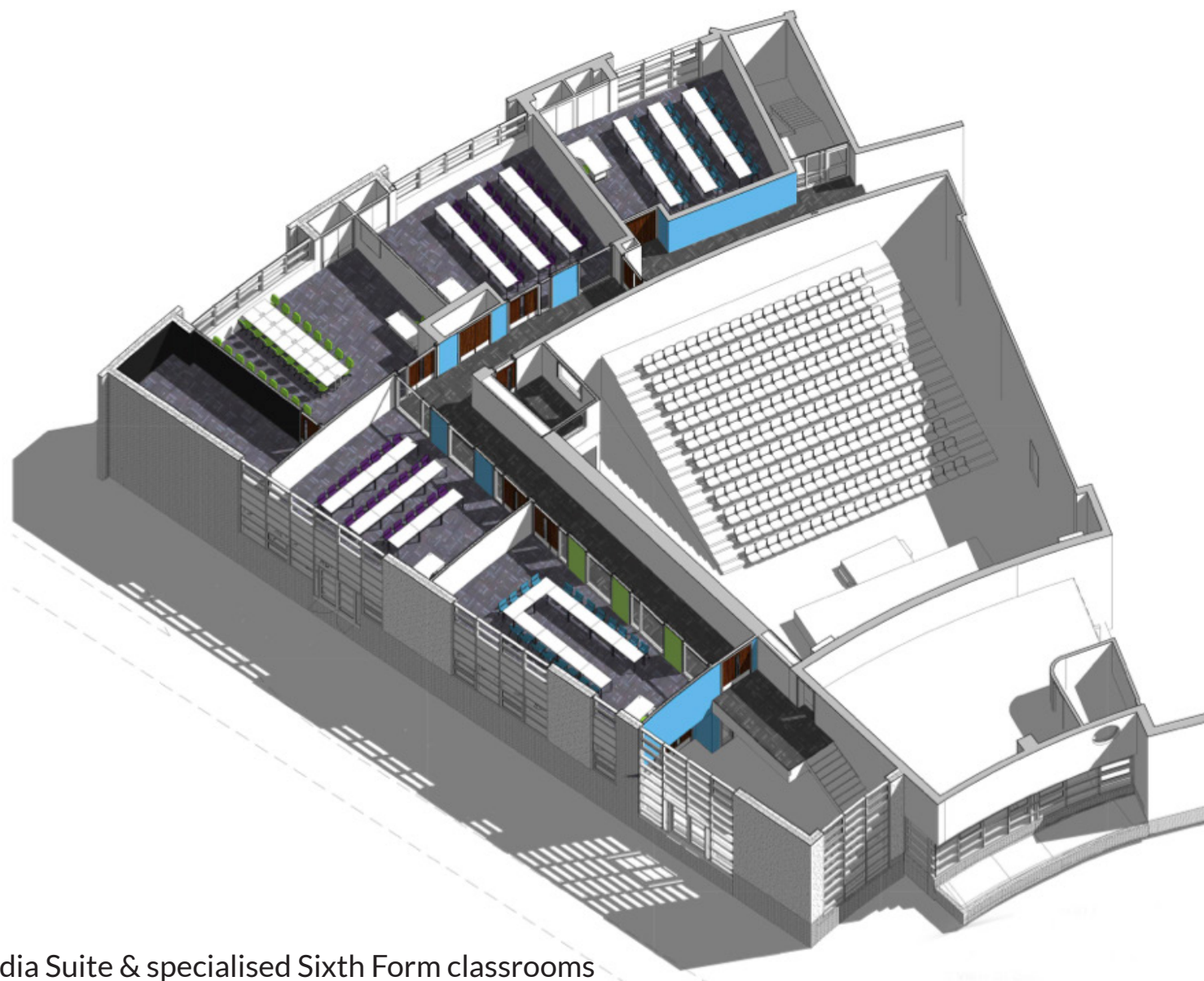


Independent Study Centre with computers and wi-fi connectivity



# Basil Hume Sixth Form Centre, Upper Floor

---



Dedicated Media Suite & specialised Sixth Form classrooms




“All of our  
Sixth Form

students achieved their  
chosen choice of university, apprenticeship  
or a place of employment”

## Valuable Enrichment Opportunities

Whether it is being elected to the Sixth Form Council, undertaking voluntary service or work experience, playing in a sports team, learning a musical instrument, acting on stage, participating in the pilgrimage to Lourdes or getting involved with sports leadership or community service, there is something for everyone. All of these enrichment activities help you to develop and flourish as an individual.



A photograph of three students, two girls and one boy, smiling and looking towards the left. They are in front of a display board filled with colorful papers and drawings. A microphone is visible on the left side of the frame.

## Spiritual Life

At the heart of the Sixth Form is our faith. We are a Catholic Sixth Form who welcome people of all faiths to our community. In addition to the academic needs of our students we recognise that without a depth of spirituality our lives can lack true meaning and purpose.

All Sixth Form students are expected to follow the spiritual programme offered at SJP. This includes daily prayer with Tutor Groups and weekly Assemblies. All students follow a certified programme of General RE which includes a variety of enriching and thought-provoking modules with guest speakers, individual and group work.



## Life beyond SJP

Whatever your choice of subjects you will find an exciting array of opportunities awaiting you at SJP, all of which will prepare you for the challenges that await you when you leave SJP.

This could include:

- School and voluntary service
- Creative arts
- Community Sports Leadership Award (CSLA)
- Work experience
- Mentoring programmes
- Duke of Edinburgh
- Retreats
- Careers guidance and UCAS Week

# School & Voluntary Service

We are immensely proud of all that the Sixth Form contribute to the school as well as our local and wider communities. The energy and enthusiasm of our students has transformed the lives of many others.

All Sixth Form students are expected to commit at least one hour each week to such service. Some of the many projects SJP Sixth Formers are involved in include:

- Fundraising for Lent and Advent
- Leading retreats and away day programmes
- Peer mentoring of younger students
- Offering support to tutors and teachers
- Taking an active part in school events such as Open Evenings
- Working with younger pupils in Music and Drama activities
- Role models and group leaders in Project Week
- Key role in Here Comes Christmas! fun and fundraising extravaganza
- Leadership of the School Council
- Eco-team



A young man and woman in school uniforms are looking at a book titled 'Twelfth Night' by William Shakespeare. The man is on the left, looking at the book, and the woman is on the right, looking towards the camera. The book is red with a black and white checkered pattern and a picture of a hand holding a quill.

## Monitoring & Guidance

The College provides a thorough programme of monitoring and guiding students for their progression to the adult world. We ensure that every individual is prepared with what they need to know in order to achieve their goals. This includes an extensive UCAS programme, dedicated to supporting pupils in the process of selecting and applying to University. Those not choosing to go to University will benefit from working with our own Work Related Learning Co-ordinator, who has links with and knowledge of local employers.

## We believe...

that SJP can offer you the very best education possible, enabling you to achieve your goals and fulfil your ambitions, whatever they may be. You will learn new skills, grow in confidence, become more independent and more fully developed as an individual and, most importantly, have had a brilliant time in the process.

## You can achieve...

great things through hard work, commitment and dedication. We will offer you outstanding support and guidance during your time with us. Our shared goal is to stimulate and challenge you to use all your gifts positively.

**Our aim is to... Inspire** curiosity, creativity and compassion

**Enrich** spiritually, socially and culturally

**Empower** independence, responsibility and confidence



“The  
College  
makes  
you feel confident  
you can achieve”

## Monitoring & Guidance

### Who are we looking for?

We are looking for young men and women with a desire to embrace all aspects of Sixth Form life. This means young adults who want excellent teaching in a unique atmosphere where they will be challenged to meet the person that they might become.

### What happens next?

Speak to your teachers about the subjects you would like to study in the Sixth Form, ask your Head of Learning or Learning Coach for their insights. For applicants new to us, come and visit and ask our advice – we look forward to meeting you.

If you think SJP might be the place for you then please complete the enclosed application form or contact us directly. For all those who will begin their Sixth Form journey with us in September, we look forward to discovering together what you will bring to our vibrant community.





This subject is offered as an AS Level or A Level course in Fine Art; you must opt to take either an AS course over one year or an A Level course over two years.

The course is essentially concerned with the traditional media of painting, drawing and printed graphic work. However, in keeping with developments in contemporary art practice, you are encouraged to explore a range of media and experimental approaches including digital technology to facilitate an engagement with more 'cutting edge' methods of visual expression. This is likely to involve a study and exploration of more innovative conceptual approaches to visual communication common to the expanded field of art practice today.

The overall aim of the course is therefore to encourage an adventurous and enquiring approach to art and design which is informed and developed through an in-depth study of both historical and contemporary art practice. In turn this should enable you to embrace and explore a range of ideas in your work of both a personal and an objective/ analytical nature and, in so doing, harness a meaningful appreciation of visual culture.

## Assessment

### AS

Both the AS Level and A Level courses are comprised of two units of work, one internally assessed component and one externally set assignment. Both components require you to keep a working journal which can be defined as a combination of a sketch-pad and a diary. This must comprise drawings/paintings, photographs, written notes documenting ideas and other visual research materials. The progression of your work at all stages will be nurtured and stimulated by an organised extra-curricular enrichment programme to include both gallery and practical workshop visits.

**AS Level Component 1** Personal Investigation: 60% of AS Level. This is an internally assessed unit in which you will generate and develop ideas through drawing, painting and other disciplines such as ceramics, research artists and their work and experiment with media and processes before producing a personal final outcome based on themes negotiated between yourself and staff.

**AS Level Component 2** Externally Set Assignment: 40% of AS. You will be required to select a single question from a set paper. You will have an extended period between January and April during Year 12 to prepare, research and develop a personal response culminating in a 10 hour practical examination.

### A Level

**A Level Component 1** Personal Investigation: 60% of A Level. This is an internally assessed unit in which you will generate and develop ideas through drawing, painting and other disciplines such as ceramics, research artists and their work and experiment with media and processes, before producing a personal final outcome based on themes negotiated between yourself and staff. These components demand evidence of critical written communication showing research and understanding in a minimum of 1000 words of continuous prose which could take the form of an essay.

**A Level Component 2** Externally Set Assignment: 40% of A Level. You will be required to select a single question from a set paper. You will have an extended period between February and April during Year 13 to prepare, research and develop a personal response culminating in a 15 hour practical examination.

### Is there anything else I should know?

Art can mix very well with subjects such as Design & Technology and humanities subjects such as History and Religious Studies which deal with moral and social issues and encourage you to explore personal attitudes. Art is a requirement of most Architecture courses at university, in combination with Maths and Physics.

### Progression Routes

The vast majority of our A2 students progress on to Art Foundation courses at colleges of Further Education. This course provides access to Degree Level courses in all aspects of Art and Design encompassing Graphics, Three -Dimensional Design, Textiles and Photography as well as Fine Art. Some of our other students have gone on to take courses in Computer Game Design or on to Art and Design Teacher Training courses.

This subject is offered as an A Level course. If you are interested in how the body functions, genes and genetics, disease, nature and the environment - if you can absorb facts, sort and synthesise a lot of information, as well as explain things fully - if you want to continue to study Biology at university level - then Biology A Level is for you. At SJP, Biology is taught in a linear course that is practical, modern and relevant to society today. We work with individuals to find suitable career paths and work placements, where necessary, to motivate you and support you in gaining a place at the university of your choice.

## Course Content

### AS and First Year of A-Level

1. Biological Molecules.
2. Cells.
3. How organisms exchange substances with their environment.
4. Genetic information, variation and relationships between organisms.

### Second Year of A-Level

5. Energy Transfers in and between organisms.
6. How organisms respond to changes in their internal and external environments.
7. Genetics, populations and ecosystems.
8. The control of gene expression.

## Assessment

As with Physics and Chemistry, Biology is taught as a linear course that is assessed by examinations in June.

### AS

**Paper 1: Topics 1 - 4**, including relevant practical skills and comprehension question

Examination paper - 1 hour 30 minutes

50% of the overall AS Level Marks

**Paper 2: Topics 1 - 4**, including relevant practical skills and extended response questions

Examination paper - 1 hour 30 minutes

50% of the overall AS Level Marks

### A2

**Paper 1: Topics 1 - 4**, including relevant practical skills and extended response questions

Examination - 2 hours 35% of the overall A Level Marks

**Paper 2: Topics 5 - 8**, including relevant practical skills and comprehension question

Examination paper - 2 hours 35% of the overall A Level Marks

**Paper 3: Topics 1 - 8**, including relevant practical skills, critical analysis of given experimental data and one essay question.

Examination paper - 2 hours 30% of the overall A Level Marks

### Is there anything else I should know?

This course would be suited to students who have followed the Core Science and Additional Science or Triple Science Course in Years 10 & 11 and have achieved a Grade C or above in each.

### Progression Routes

Biology is highly regarded and considered a 'facilitating subject' for the top universities in the country, regardless of the degree that you wish to study. It provides an excellent grounding for those wishing to progress onto Law and other traditionally 'humanities' subjects but also for Medicine and Veterinary Science as well as Business or Management.

Biology is a good choice for students looking to progress into careers as Health, Research and Clinical Professionals in areas including Medicine, Dentistry, Veterinary Science, Physiotherapy, Pharmacy, Education, Optometry, Nursing, Zoology or Marine Biology.



If you are looking for a career in business and want to develop skills and understanding that are directly relevant to the business world, then this qualification is for you. This course will help build your skills, knowledge and understanding of the business environment which are needed to continue studying to degree level and to start work. The skills and experience you will receive are vital to succeed in the business environment, thereby enhancing your employability within the business sector. Ideally you will be a good communicator, both in written and verbal forms, confident, conscientious and able to work independently.

## Units of Study

The first four units are mandatory and will give you an understanding of the business environment, management of resources, marketing and competition, which are all fundamental to the success of business organisations.

### Unit 1: The Business Environment

You will examine a range of business activities such as the purposes of different organisations and the influence of stakeholders and how businesses organise themselves through strategic planning and organisational structures. You will study the impact of external (political, legal and social) influences on business operations. This will include an insight into how businesses operate in different parts of the world and how the development of a global marketplace impacts on all businesses.

### Unit 2: Business Resources

This unit will help you develop your knowledge of the range of human, physical, technological and financial resources required in an organisation, and how the management of these resources can impact on business performance. The second part of the unit explores the sources of financial resources available and you will interpret financial statements for the selected business in order to highlight the need for the monitoring and control of costs and budgets.

### Unit 3: Introduction to Marketing

The aim and purpose of this unit is to give you an understanding of the principles of marketing used by all organisations to achieve their objectives. You will investigate strategies used when marketing a business including the types of market research used and its limitations.

### Unit 4: Business Communications

In this unit you will investigate the communication systems used to collect, store, manipulate, analyse and report information both internally and externally. You will also consider the impact of developments in IT based communication methods that has affected business organisations. In addition, you will complete two optional units that provide the opportunity to specialise in particular areas of business, enabling you to obtain a qualification that is relevant to the workplace.

The optional units are as follows:

### Unit 10: Market Research in Business

In this unit you will develop knowledge of the main types and sources of market research by collecting data and deciding on the most appropriate method for a given situation. This will take into account organisational objectives and the constraints that businesses work within. You will also investigate how data is analysed, interpreted and presented so that the research objectives are met. You will have the opportunity to plan and carry out some simple market research activities and interpret their findings.

### Unit 13: Recruitment and Selection in Business

In this unit you will prepare documents used in the recruitment process and gain experience by planning and participating in a selection interview.

## Assessment

All units are centre-assessed and externally moderated by the exam board. Candidates must achieve six units over two years in order to gain the full award equivalent to 1 GCE A Level. The course provides the flexibility of completing 3 of the core units equivalent to 1 GCE AS Level in one year. Please note there are no timetabled exams for this qualification. Evidence for assessment may be generated through a range of diverse activities including assignment and project work, case studies, workplace assessment, role play and oral presentations. The award and units from this qualification are graded as Pass, Merit or Distinction.

**Overall PASS** - Equivalent to E grade

**Overall MERIT** - Equivalent to C grade

**Overall DISTINCTION** - Equivalent to A grade

**Overall DISTINCTION \*** - Equivalent to A\* grade

## Is there anything else I should know?

The BTEC Level 3 Nationals in Business have been designed to accredit candidates' achievement in a modern and practical way that is relevant to the workplace. There is no requirement for candidates to have achieved a Level 2 Business qualification before progressing to this award.

## Progression Routes

- employment in a business related role - for example: Supervisory or Management Trainee;
- entry to college or university for further study;
- work towards work-related and occupational qualifications in Business.

This subject is offered as an A Level course. Chemistry is the study of everything material. What we eat, wear, drive, build and listen to is all affected by Chemistry. You will gain a challenging and fascinating insight into the building blocks of our planet. Starting with the structure of atoms and how they bond together, the course covers many aspects of organic, inorganic and physical chemistry. The practical aspects of the course will develop your analytical skills using a range of chemicals and high-precision equipment.

## Course Content

### AS and First Year of A-Level

1. Physical Chemistry (atomic structure, amounts of substances, bonding, energetics, kinetics, chemical equilibria and Le Chatelier's Principle).
2. Inorganic Chemistry (periodicity, Group 2 Alkaline Earth Metals, Group 7(17) The Halogens).
3. Organic Chemistry (alkanes, halogenoalkanes, alkenes, alcohols, organic analysis).

### Second Year of A-Level

1. Physical Chemistry (thermodynamics, rate equations, equilibrium constant for homogenous systems, electrode potentials and electrochemical cells).
2. Inorganic Chemistry (properties of Period 3 elements and their oxides, transition metals, reactions of ions in aqueous solution).
3. Organic Chemistry (optical isomerism, aldehydes and ketones, carboxylic acids and derivatives, aromatic chemistry, amines, polymers, amino acids, proteins and DNA, organic synthesis, NMR spectroscopy, chromatography).

## Assessment

As with Physics and Biology, Chemistry is taught as a linear course that is assessed by examinations in June.

### AS

**Paper 1:** Physical Chemistry and Inorganic Chemistry, including relevant practical skills

Examination - 1 hour 30 minutes

50% of the overall AS Level Marks

**Paper 2:** Physical Chemistry and Organic Chemistry, including relevant practical skills

Examination - 1 hour 30 minutes

50% of the overall AS Level Marks

### A2

**Paper 1:** Physical Chemistry and Inorganic Chemistry, including relevant practical skills

Examination - 2 hours

35% of the overall A Level Marks

**Paper 2:** Physical Chemistry and Organic Chemistry, including relevant practical skills

Examination - 2 hours

35% of the overall A Level Marks

**Paper 3:** Any content and any practical skills

Examination - 2 hours

30% of the overall A Level marks

### Is there anything else I should know?

This course is suited to students who have followed the Core Science and Additional Science Course or Triple Science in Years 10 & 11 and have achieved at least a Grade C or above. You will develop excellent practical and problem solving skills and the course will prepare you for a wide range of degree courses and careers in Science.

### Progression Routes

Chemistry is highly regarded and considered a 'facilitating subject' for the top universities in the country, regardless of the degree that you wish to study. It provides an excellent grounding for those wishing to progress onto Law and other traditionally 'humanities' subjects but also for Medicine and Veterinary Science as well as Business or Management.

Chemistry is a good choice for students looking to progress into careers involving Health, Research or Industry. These may include professions such as Medicine, Dentistry, Veterinary Science, Education, Forensic Science, Biochemistry, Chemical Engineering, Pharmaceutical Research and Development.

# Design Technology: Graphics (Product Design)

A Level, Level 3

This subject is offered as an A Level course. The Graphic Products course offers an opportunity for you to gain personal satisfaction and a positive experience from investigating, designing and making graphic products of your choice. This course aims to develop your appreciation of the complex relationship between design, materials, manufacture, marketing and sustainability. The practical problem solving process involved in this course aims to foster independent learning, creativity and innovation. You will be encouraged to take a broad view of Graphic Products and Design and Technology and its influence in the modern world.

## Assessment

### AS

At AS Level you will sit the OCR Innovation Challenge, demonstrating your creativity and innovation, flair for design and your ability to work with a range of materials. You will be introduced to new production processes, the impact of cost and design and a range of commercial practices within the design industry in your theory lessons. You will also complete a design portfolio, developing your personal illustrative style and modelling skills to manufacture a fully functioning prototype. Pupils may choose to explore packaging, promotional products, gadgetry, architecture or the built environment during this course.

### AS assessment: You will complete two units at AS level

#### Unit 1

Practical Exam 6 hours  
Written Exam 1 hour Weighting - 40% of AS  
Paper Topic OCR Innovation Challenge and Core Theory

#### Unit 2

Design and Make - 75 hours (approx)  
Weighting - 60% of AS

Topic - Practical, coursework element where with help and guidance you will choose an existing product to research, develop and manufacture; your designs will be developed to incorporate a range of materials and should allow you to demonstrate flair and original thought.

### A2

At A2 you will continue to design and manufacture exciting products alongside an understanding of the processes and procedures of commercial product manufacture. You will freely explore your personal design intentions by writing your own design brief and designing a product of your choosing as part of a 'Design, Make and Evaluate' project. You will use and develop skills learnt in the two AS units to produce a coursework portfolio and product that will fully demonstrate your skills. You will sit an exam at the end of Y13 which focuses on materials, methods of manufacture and industry and commerce.

### A2 assessment: You will complete two units at A2 level

#### Unit 3

Written - Exam: 2.5 hours (2 papers)  
Weighting - 40% of A2  
Paper Topic - A synoptic paper based on Design and Manufacture and a design based paper.

#### Unit 4

Design and Make - 60 hours (approx)  
Weighting - 60% of A2  
Topic - Practical, coursework element where you will create a more complex product whilst recording processes used.

### Is there anything else I should know?

It is desirable that candidates selecting this subject will have a Design & Technology subject to a minimum of C grade at GCSE. If you are wishing to follow a career or higher education route into a creative subject such as Graphics, Animation, 2D Creative Design, Graphic Media you may also consider Art & Design, ICT, Media Studies and English as companion Level 3 courses. If you are considering Engineering or Architecture based courses you may consider Physics and Mathematics as companion courses at Level 3.

### Progression Routes

Success in this course can lead to higher education qualifications and careers in Graphic Design, Computer Graphics, Art and Design, Animation, Computer Aided Design, Architectural Design, Multimedia Graphics, Advertising Graphics, as well as other design and creative disciplines.



# Design Technology: Hospitality

BTEC, Level 3

The Edexcel BTEC Level 3 in Hospitality is equivalent to one A Level.

This course leads on from the Catering GCSE and aims to further broaden your knowledge and understanding of the catering and hospitality industry. It is designed to give you the opportunity to explore these industries, looking at how they are evolving and adapting to meet current demands. You will gain a flavour of professional cookery, food service and events planning and management.

The nature of the course gives learners the opportunity to develop their time management and organisational skills whilst applying their learning to a vocational context. You will develop personal skills and attitudes essential for successful performance at university and in working life.

## How is the course structured?

The BTEC Level 3 Subsidiary Diploma in Hospitality is a two year course with content broken down into units. Each unit is worth a specific amount of credits and to successfully complete the course, you must complete a minimum of 60 credits. You must complete the selected eight units in order to achieve the required amount of credits:

## Units studied over the 2 years:

Unit 1	The Hospitality Industry (10 credits)
Unit 2	Principles of Supervising Customer Service Performance (2 credits)
Unit 3	Providing Customer Service in Hospitality (8 credits)
Unit 10	European Food (10 credits)
Unit 12	Contemporary World Food (10 credits)
Unit 13	Advanced Skills & Techniques in Producing Desserts & Petits Fours (13 credits)
Unit 15	Principles of Nutrition for Healthier Food & Special Diets (3 credits)
Unit 22	Planning & Managing a Hospitality Event (10 credits)

## Assessment

All assessment is made through completion of assignments and coursework - there is no formal exam at the end of the course. Each unit has a number of assignments to complete in order to fulfil the individual unit requirements. Within assignments, tasks will be completed to PASS, MERIT or DISTINCTION level. Each individual assignment must be completed to at least a pass level in order to pass the whole unit.

On successful completion of a unit, points are awarded depending upon the level of completion and the credit value of the unit. At the end of the course, the points will be added from all 8 units to make a combined total points score.

**Overall PASS** - Equivalent to E grade

**Overall MERIT** - Equivalent to C grade

**Overall DISTINCTION** - Equivalent to A grade

**Overall DISTINCTION\*** - Equivalent to A\* grade

## Is there anything else I should know?

Candidates selecting this subject will have a Catering qualification to a minimum grade C at GCSE. The Edexcel BTEC Level 3 Subsidiary Diploma in Hospitality can be studied with a variety of other subjects to suit the needs of the student; popular course combinations include Business Studies, Chemistry, Health and Social Care and Physical Education. It is widely accepted by universities and during the UCAS application process; students will need to provide details on attainment/expected attainment within individual units.

## Progression Routes

The hospitality and catering industries are major employers in the UK - highly competitive and challenging sectors offering a wealth of employment opportunities. This course covers a wide range of units which allows students to follow pathways of interest to their future career. Progression routes into further training and higher education are wide ranging; many students who study Hospitality continue their studies at university. The Level 3 course is excellent preparation for entering courses such as Events Management, Nutrition and Health Studies, Dietetics, Consumer Science and Health Promotion.

# Design Technology: Textiles (Product Design)

A Level, Level 3

This subject is offered as an A Level course. The Design & Technology Textiles course gives you the opportunity to develop your capacity to design and make textile products and to appreciate the complex relations between design, materials, manufacture and marketing. The subject will enable you to take a broad view of design and technology and to develop a wide range of skills, including working with others, thinking creatively and making quality products.

## Assessment

### AS

At AS Level you will sit the OCR Innovation Challenge, demonstrating your creativity and innovation, flair for design and your ability to work with a range of materials. You will be introduced to new production processes, the impact of cost and design and a range of commercial practices within the design industry in your theory lessons. You will also complete a design portfolio, developing your personal illustrative style and modelling skills to manufacture a fully functioning textiles prototype. Pupils may choose to explore fashion, furnishing or a range of other textiles products during this course.

**AS assessment: You will complete two units at AS level**

### Unit 1

Practical Exam - 6 hours

Written Exam - 1 hour Weighting - 40% of AS

Paper Topic - OCR Innovation Challenge and Core Theory

### Unit 2

Design and Make - 75 hours (approx)

Weighting - 60% of AS

Topic - Practical, coursework element where with help and guidance you will choose a 'classic' textiles product to research, develop and manufacture; your designs will be developed to incorporate a range of materials and should allow you to demonstrate flair and original thought.

### A2

At A2 you will continue to design and manufacture exciting textile products alongside an understanding of the processes and procedures of commercial textile manufacture. You will freely explore your personal design intentions by writing your own design brief and designing an textiles product of your choosing as part of a 'Design, Make and Evaluate' project. You will use and develop skills learnt in the two AS units to produce a coursework portfolio and product that will fully demonstrate your skills. You will sit an exam at the end of Year 13 which focuses on Textiles materials, methods of manufacture and industry and commerce.

**A2 assessment: You will complete two units at A2 level**

### Unit 3

Written - Exam: 2.5 hours (2 papers)

Weighting - 40% of A2

Paper Topic - A synoptic paper based on Design and Manufacture and a design based paper.

### Unit 4

Design and Make - 60 hours (approx)

Weighting - 60% of A2

Topic - Practical, coursework element where you will create a more complex textile product whilst recording processes used.

### Is there anything else I should know?

If you are wishing to follow a career or higher education route in Textile Design, Fashion or Interior design you may also consider Art & Design and ICT as companion A Levels. If you are wishing to follow a career or higher education route in Fashion Merchandising and Buying, you might also consider Business Studies, Mathematics and ICT as companion Level 3 courses. Media Studies, Graphics, Business Studies and ICT are suitable courses to choose along side Textiles if you wish to enter the creative advertising and marketing profession.

### Progression Routes

Success in this course can lead to higher education qualifications and a number of exciting careers in Textile Design, Clothes/ Fashion Design, Interior Design or Fashion Merchandising and Buying. The advertising and marketing profession always needs creative people too, as does the manufacturing industry. You could also apply this A Level to your portfolio of skills as a teacher.

# English (Combined)

A Level, Level 3

Do you enjoy reading and writing independently, away from your college studies? Above everything else, this is the sign that you will enjoy and be successful at A Level English, whether you choose Literature or Language and Literature Combined.

## English Language and Literature (Combined)

On this course you will combine the study of literary texts with the study of language and linguistic techniques to better understand how writers construct and convey meaning and how in turn readers develop an understanding of a text. You will create your own writing pieces, but also you will read and write about some classic works of literature. If you love to read and enjoy producing your own writing then this course will allow you to showcase your abilities at the same time as experiencing texts across a wide range of genres. You will need a C or above in English in order to tackle this course.

## Assessment

### Assessment Objectives

- Apply concepts and methods from integrated linguistic and literary study as appropriate, using associated terminology and coherent written expression.
- Analyse ways in which meanings are shaped in texts.
- Demonstrate understanding of the significance and influence of the contexts in which texts are produced and received.
- Explore connections across texts, informed by linguistic and literary concepts and methods.
- Demonstrate expertise and creativity in the use of English to communicate in different ways.

## AS

### Examination 100%

The components comprise a comparative analysis of poetry and an unseen text along with creative writing and an accompanying commentary. Candidates will also study a drama text and learn how to respond critically to non-fiction. Students will have the opportunity to study a diverse range of texts and hone their critical analysis skills. The chance to produce original creative writing will enable students to explore a range of texts and genres.

## A Level

### Examination 80% Non-exam assessment 20%

The components comprise a comparative analysis of poetry and an unseen text and the critical response to prose. Students will also study drama texts including a Shakespeare play. This course also develops student engagement with spoken language and non-literary materials. The non-exam assessment enables pupils to pursue an independent line of enquiry investigating language usage within a particular text or genre.

## Is there anything else I should know?

The skills that you will learn in this subject, such as independent research, close reading, analysis and evaluation of material and assimilation of material into a formal essay are desirable skills for universities. English (Combined) therefore is an ideal companion to History, Spanish/French, Psychology, Religious Studies or any of the Science subjects.

## Progression Routes

Obviously English Combined will be appropriate for students who wish to progress to study a form of English at university. It also provides many of the skills desirable for degrees in History, Law, Anthropology, Criminology or Teaching.



# English Literature

A Level, Level 3

On this course you will study some fantastic plays, novel and poetry, ranging in period. You must be willing to undertake independent reading, which should not really feel like a chore, more a pleasure. A qualification in English Literature proves that you are highly motivated, analytical and confident in your ability to construct and convey an argument in both spoken and written form. You will need a C or above in both English and English Literature in order to tackle this course.

## Assessment

### Assessment Objectives

#### AS

Examination 100%

- Articulate informed, personal and creative responses to literary texts, using associated concepts and terminology and coherent, accurate written expression.
- Analyse ways in which meanings are shaped in literary texts.
- Demonstrate understanding of the significance and influence of the contexts in which literary texts are written and received.
- Explore connections across literary texts.
- Explore literary texts informed by different interpretations.

The components comprise a study of prose, poetry and drama including Shakespeare from a range of periods and develop close reading and analytical skills. Students are encouraged to explore the relationships that exist between texts and the contexts in which they are written, received and understood. The examination will assess the ability to explore central literary themes and also to respond to unseen material.

#### A Level

Examination 80% Non-exam assessment 20%.

The components comprise a study of prose, poetry and drama including Shakespeare from a range of periods. Students are encouraged to study texts using a variety of reading strategies and perspectives and debate and challenge the perspectives of other readers as they develop their own informed personal response to texts. The non-exam assessment offers the opportunity to independently study and research two prose texts. Students will develop the skills needed to produce a coherent and convincing argument and use literary terminology with confidence.

## Is there anything else I should know?

The skills that you will learn in this subject, such as independent research, close reading, analysis and evaluation of material and assimilation of material into a formal essay are highly desirable skills for universities. English Literature therefore is an ideal companion to History, Spanish/French, Psychology, Religious Studies or any of the Science subjects.

## Progression Routes

English Literature is highly regarded and considered a 'facilitating subject' for the top universities in the country, regardless of the degree that you wish to study. It provides an excellent grounding for those wishing to progress onto Law and other traditionally 'humanities' subjects.

# Extended Project Qualification

AS Level, Level 3

This is a Level 3 qualification. It is graded and carries the same UCAS points as an AS Level and can be taken as a free-standing qualification. The course offers students a unique opportunity to develop essential skills for higher education and the workplace, in a subject area of their own choice. The Extended Project gives students more control over their study than ever before. You have a free choice of project topic, so you can choose to explore a further aspect of a subject you're studying, or another subject, or choose a topic in which you have a personal interest. This level of choice and flexibility means students are engaged and motivated and gain valuable research and project management skills along the way.

## You have to:

- Choose a topic of your choice to study
- Complete a Production Log to document your project process
- Plan, research and write up their findings of your project
- Prepare and deliver a presentation on the outcome

## Assessment

This is an independent piece of research. You will meet with a member of staff (supervisor) weekly to discuss your progress and to guide you and help you develop the necessary skills to complete a successful project. You will also attend taught sessions which equip you with the key skills needed for primary research, project writing and independent study.

You can write a 5000 word essay arguing both sides of your research topic or you can create a product with a 1000 word report on the research that lead you to your end product.

The assessment covers both the process and the end product. The final project, plus the Production Log, will be assessed as a whole, according to a generic set of marking criteria. We'll be looking at how well students identify and use resources, carry out research, develop their ideas to realise an outcome and then reflect on the outcome and the process.

Students complete a Production Log as they carry out their projects and at the end they must deliver a presentation which should be for a non-specialist audience. This could take the form of a group presentation (in the case of a group project) or a one-to-one presentation to the supervisor. The presentation must be supported by a question and answer session which is recorded in the Production Log. The complete Production Log, a written report, the evidence and the presentation are assessed together by the Centre at the end of the process.

## Is there anything else I need to know?

In order to be successful in this qualification it is essential that you have achieved a grade C in English Language.

This AS-level is an independent piece of work and will require students to manage their time effectively throughout the year. Students will be encouraged through self motivation and independent study inside and outside of school. Students will need to be confident within their area of study to evaluate, reflect, criticise and support their ideas using other piece's of research.

Examples of projects chosen include:

- Teenage pregnancy debate, who is to blame?
- Gender equality in the police - Can women really be police officers?
- Is God real?
- Teach yourself the guitar - with a DVD and booklet
- A website designed around childhood obesity and how to deal with it
- Education through performing arts, focusing on underage drinking
- Domestic Violence and its affects on the family
- Tourism within Liverpool and its regeneration
- Design your own skate park and create a miniature structure of the design using the key materials
- Is Rugby for girls?
- Design and create a Sixth Form magazine

## Progression Routes

The project will attract UCAS points (for entry to universities). Students might use the project at interview stage for higher education and/or in their Personal Statement on their UCAS form. The project will develop important independent learning and study skills that will improve the chances of success when progressing to higher education or employment.

Are you a linguist? Are you a good communicator? Do you enjoy travelling to new places? Are you interested in people and other cultures? Then you should be considering studying French to AS and A2 level! More and more universities are asking for a language qualification at GCSE for their courses, irrespective of your chosen career path.

In addition to lessons with your teachers each week you will have extra conversation classes with a native French speaker to improve your accent and the style of your spoken French. You will take advantage of the instant access to authentic materials that the internet affords us and use your language in real life situations.

There will also be the opportunity to travel to France to practise your skills and immerse yourself in the French culture.

The course is divided into 4 units, two studied at AS and two at Advanced level. You will develop and refine your listening, speaking, reading and writing skills as well as revising and building on the grammar already learnt at GCSE to improve the complexity and fluency of your language.

## At AS you will study various themes including:

- Media
- Popular Culture
- Healthy Lifestyles
- Family and Relationships

## At A2 you will study the themes of:

- Environment
- The Multicultural Society
- Contemporary Social Issues
- Two cultural topics from the following; a region of France, French history, a French author, architect, painter or director.

## AS

### Unit FREN1 70%

Listening, Reading and Writing (2 hours)

Listening and Responding, Reading and Responding, Grammar tasks, Translation French-English, Essay in French on one of the themes covered in lessons.

### Unit FREN2 30%

Speaking (15 minutes)

Part 1—Discussion of a stimulus card

Part 2—Conversation on topics covered in class. Taken in May of AS year.

## A2

### Unit FREN3 70%

Listening Reading and Writing (2.5 hours)

Listening and Responding, Reading and Responding, Translation English - French, Translation French - English, Essay in French on one of the cultural topic areas; region of France, French history, a French author, architect, painter or director.

### Unit FREN4 30%

Speaking (15 minutes)

Part 1—Discussion of a stimulus card

Part 2—Conversation on two cultural topics covered by the candidate. Taken in May of A2 year.

## Is there anything else I should know?

You must have at least a grade C at GCSE in French. There is no coursework element in French A level. We follow the AQA exam board.

## Progression Routes

French is highly regarded and considered a 'facilitating subject' for the top universities in the country, regardless of the degree that you wish to study. It provides an excellent grounding for those wishing to progress onto Law and other traditionally 'humanities' subjects but also for Medicine and Veterinary Science as well as Business or Management.

The Advanced GCE in French can lead to further study of languages at degree level and can easily be combined with other courses such as Law, English, Business, International Studies or other languages that can be taken up at university such as Chinese and Japanese.

Current popular career choices for students of languages include Translation and Interpreting, Business, Journalism, Computing, Law, Publishing, Marketing, as well as Teaching, both in the UK and abroad. Linguists are sought after employees for many types of Business and Industry.



Geography is the study of physical and human environments and how they interact together. It is delivered in the two disciplines of Physical and Human Geography and deals with a range of current topical global issues including global warming, tropical cyclones and global conflicts. AS and A2 Geography build on what is covered at GCSE Level and apply a range of detailed, current and topical case studies to core geographical concepts.

- You will study the systems, patterns and processes that take place along the course of a river.
- You will study the physical and human causes of flooding and identify locations that are at risk from flooding and plan how to manage them e.g. New Orleans.
- You will study coastal systems, patterns and processes and how the coast is protected and managed.
- You will study the patterns and distribution of global food supply and how it is managed.
- You will study energy issues identifying the key types of energy, how it can be sustained and the impact it has on the environment.

#### **You are encouraged to:**

- Develop and apply your understanding of geographical concepts and processes to understand and interpret the changing world.
- Develop your awareness of the complexity of interactions within and between societies, economies, culture and environments at local and global scales.
- Develop as global citizens who recognise the challenge of sustainability and the implications for their own and others' lives.
- Improve as critical and reflective learners aware of the importance of attitudes and values, including their own.
- Become apt in the use of application of skills and technologies through your geographical studies.
- Be inspired by the world around you, and gain enjoyment and satisfaction from your geographical studies.

#### **Assessment**

#### **AS COURSE CONTENT - two written papers**

##### **Unit 1 One written paper 2 hours. 70% of AS**

- Physical Topics
- Rivers, Floods and Management
- Coastal Environments
- Human Topics
- Population Change
- Health Issues

##### **Unit 2 One written paper 1 hour. 30% of AS**

#### **Geographical Skills**

#### **A2 COURSE CONTENT - two written papers**

##### **Unit 3**

- Plate Tectonics and Associated Hazards
- Ecosystems: Challenge and Change
- World Cities

**One written paper 2 hours 30 min  
(30% of overall A Level)**

##### **Unit 4**

Geographical Issues evaluation

#### **Is there anything else I should know?**

Field trips are an integral part of the geography department at SJP. It is a vital and valuable component of the compulsory phase of every student's school experience. At both AS and A2, field trips are organised to provide an opportunity for students to experience and test theory learnt in the classroom.

#### **Progression Routes**

Geography is highly regarded and considered a 'facilitating subject' for the top universities in the country, regardless of the degree that you wish to study. It provides an excellent grounding for those wishing to progress onto Law and other traditionally 'humanities' subjects.

Previous students have gone on to study Geography at university, as either a science or in the arts faculties. Your skills of data analysis, interpretation and your ability to present logical arguments all match the skills required in today's workplace. Geographers are highly skilled in both literacy and numeracy, and employers recognise the abilities A Level Geographers possess. A geographical background is beneficial in the following careers: Crime Intelligence Analyst, Travel Writer, Environmental Manager, Teaching and Environmental Planning and Surveying.

Government & Politics is offered as an A-Level course. Studying Government and Politics allows you to understand the world around you and the means by which societies function. Do you know who you'd vote for in a General Election? Do you think Britain should adopt the Euro? Should Scotland become independent of Britain? Do we still need political parties? Why did George Bush become President in 2000 when more people voted for his opponent? Why did Barack Obama win such a landslide victory in 2008? Why is the gun culture so widespread in the USA? All these questions, which are of crucial importance in today's world, are explored as part of the AS and A2 Government and Politics course. Ultimately, it is about the study of power. In theory power in democracies, such as the UK and USA, lies with the people. This course will allow you to discover how much power the people really have. A fundamental part of the course is a willingness to follow the news, through the TV, internet or newspapers. There will also be the opportunity to visit the places where the news is made, such as a trip to Parliament in Westminster or there may be a visit to the White House in Washington DC.

## Assessment

The course is divided into four units; two studied at AS and two at A2. Each unit is worth 25% of the overall A Level grade.

### AS

**Unit 1:** People & Politics (Democracy, Political Parties, Elections and Pressure Groups)

**Exam in June:** 1 hour 20 minutes

**Unit 2:** Governing the UK (Prime Minister & Cabinet, Judiciary, Parliament and the Constitution)

**Exam in June:** 1 hour 20 minutes

### A2

**Unit 3:** Representative Processes in the USA (Elections & Voting, Pressure Groups, Political Parties and Racial & Ethnic Politics)

**Exam in June:** 1 hour 30 minutes

**Unit 4:** Governing the USA (Constitution, Congress, President and Supreme Court)

**Exam in June:** 1 hour 30 minutes

## Is there anything else I should know?

Government & Politics will develop excellent analytical skills and a variety of effective communication techniques as well as an ability to create and sustain a clear and coherent argument. It works well with subjects such as History, English and Geography at AS and A2, but equally can offer breadth of knowledge to those who have chosen a Mathematics and Science route through Sixth Form. Basically, it sits well with any combination of courses! It is expected that students will have obtained at least a grade C in English.

## Progression Routes

The study of Government and Politics can lead to a wide variety of careers and further study including administration, local government, the police service, journalism, law and of course politics.

# Health & Social Care (Double Award)

A Level Double Award, Level 3

Do you enjoy a challenge? Are you a good communicator?

Do you care about other people and how our society develops?

Health and social care can give you these opportunities as the course is delivered alongside actual health and social care settings. You will carry out work place visits, interviews and activities with service users to develop interpersonal and communication skills.

## Assessment

You complete six units at AS level and a further six units at A2 level, all of equal weighting.

## AS

### Unit 1 Human Growth and Development (external examination)

This unit will develop your knowledge and understanding of key aspects of growth and development and the experience of health and well-being throughout the different life stages. You will explore factors that can influence human growth, development and health experience, including those that are inherited and those that are acquired during our lifespan. You will also consider what it means to be healthy, and how health and well-being can be promoted.

### Unit 4 Social Aspects and Lifestyle Choices (external examination)

The knowledge that you will gain from this unit will help you understand the importance of social factors in effective health and social care practice. It will develop your knowledge and understanding of how social factors can affect a service user, and how these factors impact on care practice. You will learn about the different lifestyle choices people make and the life course events they experience that affect their health and well-being.

### Unit 2 Communication and Values (portfolio)

This unit will give you an understanding of the importance of communication in all caring activities, and about values involved in care. You will learn about the value base of care and the transmission of values through communication.

### Unit 3 Positive Care Environments (portfolio)

The knowledge that you gain from this unit will allow you to understand that positive care practice relies on practitioners having a comprehensive understanding of the diverse society we live in, and that the promotion of a care value base can enhance services users' opportunities in accessing services. On completion of this unit you will understand that organisations and society have a responsibility to protect and safeguard the rights of those who are vulnerable, and that the only effective way to do this is through formal policy and legislation.

### Unit 5 Activities for Health and Well Being (portfolio)

In this unit you will investigate activities in health and care settings. You will learn about types of activities, their benefits, and their value in terms of health and well-being. You will gain practical experience and skills in choosing, planning, implementing and evaluating activities for service users in health and social care.

### Unit 6 Public Health (portfolio)

This unit will develop your knowledge and understanding of current public health issues, policies and practices in the UK. The public health field focuses on factors that affect the health and well-being of large populations of people. You should be aware of the impact that social and economic factors and lifestyle choices have on the health status of populations and communities in the UK. You should also understand how public health problems arise and should know about the methods used to monitor, prevent and combat major public health issues.

## A2

### Unit 7 Meeting Individual Needs (external examination)

This unit aims to assess your knowledge and understanding of how health and social care services are structured and provided within the UK. The unit will focus on how services are tailored to meet individual needs through the use of care plans, and on the importance of working in a multi-disciplinary environment. The unit also allows you to demonstrate your understanding of how accountability is maintained through quality assurance procedures, put in place both by the organisation and by government.

### Unit 12 Understanding Human Behaviour (external examination)

This unit will develop your knowledge and understanding of how human behaviour is understood and how it is applied to health and social care practice. It will also help you understand influences on behaviour and its effects, and how theories of behaviour can be used in health and social care practice to make sense of the way that people behave, think and feel. You will learn about the importance of research to theory and to health and care practice, and find out how the care value base supports care practice.

*Continues on next page*



# Health & Social Care (Double Award)

A Level Double Award, Level 3

## **Unit 8 Promoting Health and Well Being (portfolio)**

This unit will develop your knowledge and understanding of promoting health and well-being. You will find out why health promotion campaigns are carried out, and how topics and target groups are identified. By carrying out your own small-scale health promotion you will learn about the different approaches to health education, and how they are put into practice, and you will develop skills in planning, carrying out, and evaluating an activity to promote health and well-being.

## **Unit 9 Investigating Diseases (portfolio)**

This unit develops concepts of health and disease. You will learn about the disease process, and will carry out an individual investigation into various aspects of two specific diseases. This will include the biological basis of diseases, the ways in which a diagnosis may be made, the availability of treatment, the factors that may influence the outcome of the treatments, the strategies for preventing the spread or occurrence of the disease, and epidemiological methods for tracking disease.

## **Unit 10 Using and Understanding Research (portfolio)**

This unit will develop your knowledge and understanding of research methods and the research process. Research awareness is increasingly important in the health and social care field because of the emergence of evidence-based care practice. Research now plays a key part in developing and improving health and social care policies, service provision and care interventions. Carrying out a small research project is a practical way of developing research awareness and basic research skills.

## **Unit 11 Social Issues and Welfare Needs (portfolio)**

The knowledge you gain from this unit will help you understand the variety of social issues and welfare needs, which exist in our society. You will be able to identify and investigate those social issues which have existed for many years, and those issues that are more contemporary in nature. You will explore how social issues and welfare needs impact on service users in different health and social care settings.

## **Is there anything else I should know?**

Health and Social Care works well alongside Biology, Psychology and Sociology. This course is worth 2 A levels.

## **Progression routes**

The course covers a wide range of health, social care and early year issues which allow you to follow pathways of interest to your future career. Progression routes into further training and higher education are far reaching.

Nursing, social work, youth and community workers, health promotion, teaching and nursery managers are some of the potential careers open to you.

This subject is offered as an A Level course. The History course is intended to develop powers of reasoning, analysis and expression and to promote a thorough understanding of modern societies. As a subject, History is very well respected by both universities and employers. Studying History helps you to understand more fully the issues and events which make the headlines today. Why are there still Nazis in Germany today? Why is the Health Service so difficult to fund? Why is there a crisis in the Middle East? Without an understanding of History such questions have little chance of being understood or resolved. It is a subject which will help you to understand people and their attitudes, beliefs and behaviour. As part of the course there are many opportunities to take part in a variety of trips and visits, including conferences in London and international study tours to destinations such as Germany and Poland.

## Assessment

All examinations will be sat at the end of the two year course in Summer 2017. Students will be expected to complete both essay based questions as well as analysis of historical interpretations in all examination papers. The independent study will be completed in the form of a 3000 word assignment.

From September 2015, AS History will be a stand-alone qualification. This means that it cannot be used to contribute towards an A Level History grade. It will consist of two units with examinations to be sat in June 2016.

## Over the two year course topics may include:

- The making of modern Russia 1855-1991
- Ireland and the Union 1774-1923
- Germany 1871-1990
- Britain and the USA in the twentieth century
- The American Dream: the USA 1917-1996
- Communist governments in the twentieth century
- England 1509-1603: Authority, Nation and Religion.

History A2 is assessed through a mixture of examinations and coursework. Students will complete two units in each year of study, three of these will be assessed through examinations and the fourth through an independent study and coursework piece of 3000 words.

## Is there anything else I should know?

History would be an ideal choice in combination with a variety of arts and humanities subjects such as Politics, English Literature, Sociology, Religious Studies and Geography as well as demonstrating breadth of knowledge and understanding to universities and employers if the rest of your subjects are science or maths based. The History Department expect that you will have gained a grade C or above at GCSE level or in a related subject such as Geography (as the study of GCSE History is not an essential requirement for you to opt for A Level History), and a Grade C in English.

## Progression Routes

History is highly regarded and considered a 'facilitating subject' for the top universities in the country, regardless of the degree that you wish to study. It provides an excellent grounding for those wishing to progress onto Law and other traditionally 'humanities' subjects.

A Level History can lead to further study of the subject at degree level and provides an ideal foundation for careers in areas such as Journalism, Law, Politics, Education, the Civil/Diplomatic Service or indeed any profession which requires analytical ability or the skill of presenting a coherent argument.

This course is a BTEC National Subsidiary Diploma, equivalent to one A Level. BTEC Nationals are an exam free alternative to the more traditional A Level courses, taking a more practical approach to learning and assessment. They are 'industry relevant' qualifications geared to key sector requirements and are designed as vocationally related qualifications to suit a range of leaning styles.

When you reach Level 3, you are offered a more in-depth look at ICT in the modern workplace and are given an insight into its role in specialist careers. This qualification provides ongoing learning and assessment of the practical skills and knowledge required to succeed in ICT-related careers or further study.

## Assessment

This is a two year course and over that time you will complete 6 units of study. All units are internally assessed then externally moderated by the exam board (Edexcel). There are no external tests or exams, and ongoing assessments take place throughout the course. All units are centre-assessed and externally moderated by the exam board. Candidates must achieve six units over two years in order to gain the full award equivalent to 1 GCE A Level. The course provides the flexibility of completing 3 of the core units equivalent to 1 GCE AS Level in one year.

## The course is broken up as follows:

### Year 12

#### Unit 1 Communication and Employability Skills in ICT

This unit provides an opportunity for learners to understand the range of such non-technical soft skills and to appreciate what other skills and knowledge they will need to develop in order to be an effective employee. Learners will have the opportunity to identify and consider their own set of skills and improve them where necessary.

#### Unit 2 Computer Systems

Most IT practitioners will at some stage have to set up, use, customise and maintain a computer system or systems. In order to do so effectively they will need to understand the components that make up a computer system. This unit develops skills in hardware components and the operation system.

#### Unit 8 E-Commerce

The unit starts by looking at the benefits and drawbacks for society of e-commerce and then investigates the technologies involved in e-commerce. This is followed by exploring the security issues surrounding the use of e-commerce, both from the business and the user perspective.

### Year 13

#### Unit 28 Website Production

This unit considers the whole process from identification of need, design, build, upload, test, maintain and review. You will learn to select when and where these skills are most appropriate, basing this decision on client and user needs. As with any field of IT, a comprehensive understanding of the relevant legislation and guidelines is always fundamental.

#### Unit 9 Computer Networks

You will explore the different types of networks and the standards relating to network systems. This will include local and wide area networks and will also cover both wired and wireless systems.

#### Unit 29 Installing and Upgrading Software

This unit teaches you to follow the necessary procedures to successfully install new software and update existing software when required.

## Assessment

**Overall PASS** - Equivalent to E grade

**Overall MERIT** - Equivalent to C grade

**Overall DISTINCTION** - Equivalent to A grade

**Overall DISTINCTION\*** - Equivalent to A\* grade

## Is there anything else I should know?

The BTEC Level 3 Nationals in ICT have been designed to accredit candidate's achievement in a modern and practical way that is relevant to the workplace. There is no requirement for candidates to have achieved a Level 2 ICT qualification before progressing to this award. This course is for anyone who wants a qualification in ICT for either future study or employment. It teaches valuable ICT skills in an industry based context.

## Progression Routes

This course is ideally suited to be studied alongside courses such as Business Studies and other industry or vocational related courses. Please see the College website for examples of Learning Programmes and go to [www.edexcel.com](http://www.edexcel.com) for additional information. This qualification provides the skills required for students to enter employment or go on to study other ICT or computer-related courses at HND or Degree Level.



Do you enjoy a challenge and want an A Level that is highly regarded by universities and employers alike?

To study Mathematics at Advanced level you must have a determination to succeed and a passion for successfully solving problems. The course is based on the modular Edexcel scheme. There are 3 modules for the AS exam - Core 1, Core 2 and Statistics or Mechanics. In Year 13 there are a further 3 modules for the A2 exam - Core 3, Core 4 and Decision.

The Core units are Pure Mathematics modules. The focus of the Core modules is to further develop elements of the mathematics that you will have explored in the second half of Year 11. It will be a continuation of work on topics such as solving quadratic equations, factorising, sketching curves and trigonometry. You will also extend your mathematical knowledge further by learning how to differentiate and integrate.

Statistics explores some of the handling data GCSE topics that you have already seen, but to a higher level. You will complete calculations that will help you better explore the spread of data and the correlation shown on scatter graphs.

Mechanics is the study of motion. It looks at the way that a physical body moves when subjected to a force. Much of the work is based around Newton's three laws of motion.

Decision Mathematics looks at algorithms and linear programming, and how this is used to find solutions in a logical way following systematic methods. You will learn how to follow patterns and answer questions in a way that a computer would solve a problem.

## Assessment

### AS

3 exams, 1 hour 30 minutes each, taken in the Summer of Year 12 each of equal weighting.

**Core 1:** Algebra and functions, co-ordinate geometry, sequences and series, differentiation, integration.

Core 2: More on each of the above topics with trigonometry and logarithms.

**Statistics 1:** Representation and summary of data, probability, correlation and regression, discrete random variables, discrete distributions, the normal distribution.

### Or

**Mechanics 1:** Mathematical modelling, vectors, kinematics, dynamics, statics of a particle, moments.

### A2

3 exams, 1 hour 30 minutes each, taken in the Summer of Year 13 each of equal weighting.

**Core 3:** Algebra and functions, trigonometry, exponential and logarithms, differentiation, numerical methods.

Core 4: Algebra and functions, trigonometry, exponential and logarithms, integration, vectors.

**Decision 1:** Algorithms, critical path analysis, matchings, linear programming, networks, route inspection algorithm

### Is there anything else I should know?

There is no coursework in A Level Mathematics. Students intending to take this subject should have achieved at least a minimum of grade B at GCSE.

### Progression Routes

Mathematics is highly regarded and considered a 'facilitating subject' for the top universities in the country, regardless of the degree that you wish to study. It provides an excellent grounding for those wishing to progress onto Law and other traditionally 'humanities' subjects but also for Medicine and Veterinary Science as well as Business or Management.

Mathematics A-level is an essential requirement for many mathematics and science based courses at degree level. It is also a highly regarded and valuable qualification for a wide range of professions including Engineering, Computing, Economics, Accountancy and Actuarial work and is a suitable qualification for undergraduate courses in subjects such as Psychology, Law, Medicine and Business & Management Studies.

# Further Mathematics

A Level, Level 3

Further Mathematics is an AS/A level qualification which both broadens and deepens the mathematics covered in AS/A level Mathematics. AS level Further Mathematics is designed to be studied alongside AS level Mathematics in Year 12.

Any student planning to take a mathematics-rich degree (this covers a very wide range of academic areas - Engineering, Sciences, Computing, Finance/Economics, etc., as well as Mathematics itself) will benefit enormously from taking Further Mathematics, at least to AS level. Students who are not planning to study for mathematics-rich degrees but who are keen on mathematics will find Further Mathematics a very enjoyable course and having a Further Mathematics qualification identifies students as having excellent analytical skills, whatever area they plan to study or work within.

AS Further Mathematics introduces new topics such as matrices and complex numbers that are vital in many mathematics-rich degrees. Students who have studied Further Mathematics find the transition to such degrees far more straightforward. Studying Further Mathematics also boosts your performance in AS/A-level Mathematics.

To study Further Mathematics at advanced level you must be studying A level Mathematics, and should have the top grades from GCSE Mathematics. The course is based on the modular Edexcel scheme. There are 3 modules for the AS exam: FP1 (Further Pure 1), plus any two applied modules that are not being taken as part of the AS Mathematics course.

These can be Statistics 1, Statistics 2, Mechanics 1 or Mechanics 2.

## Assessment

### AS

3 examinations, 1 hour 30 minutes each, to be taken in the Summer of Year 12.

**Further Pure 1:** Series; complex numbers; numerical solution of equations; coordinate systems, matrix algebra, proof.

**Mechanics 1:** Mathematical modelling, vectors, kinematics, dynamics, statics of a particle, moments.

**Mechanics 2:** Kinematics, centres of mass, work, power and energy, collisions, statics of rigid bodies.

### A2

3 examinations, 1 hour 30 minutes each, taken in the Summer of Year 13

The exact combinations of these examinations will be decided upon based on pupil performance in Year 12 Mathematics and Further Mathematics in conjunction with what will be studied in Year 13 Mathematics also. These modules could include Further Pure Mathematics 2 or 3, Statistics 2 or 3, Mechanics 2 or 3 or Decision 1 or 2.

### Is there anything else I should know?

You should only be considering taking AS Further Mathematics if you are also taking AS Mathematics.

### Progression Routes

Further Mathematics qualifications are highly regarded and are strongly welcomed by universities. Students who take Further Mathematics are really demonstrating a strong commitment to their studies, as well as learning mathematics that is very useful for any mathematics-rich degree.

This subject is offered as an A Level course. Media Studies is designed to enhance your enjoyment, understanding and appreciation of the media and its role in your daily life. The course introduces you both to media ideas and the practice of production, which gives you the chance to develop a real understanding of media platforms, the contemporary media landscape and the influential role of the media in today's society. This course helps you develop these relationships with the media. As a consumer you'll become more aware of the many ways in which media messages are presented to us, as well as discovering how the institutions which produce and distribute media products are trying to reach you. Using the most up to date technology, utilising the capabilities of Apple iMacs and associated software, you will create work of a professional standard that will showcase your technical and creative capabilities.

## Assessment

### AS

#### **G322: Key Media Concepts (TV Drama) (50% of AS marks)**

2 hour written examination

This paper covers the two areas of Textual Analysis and Representation alongside Institutions and Audiences. In Section A, candidates answer questions on an unseen moving image extract that is then linked to some aspect of the representation within the sequence. In Section B, candidates study a specific media industry from a choice of: film, music, newspapers, radio, magazines or video games.

#### **G321: Foundation Portfolio in Media (50% of AS marks)**

Practical unit, internally assessed and externally moderated.

This is a coursework unit where candidates produce the opening two minutes (including titles) of an original fictional film. This process involves progression from a pre-production, preliminary exercise to a more fully realised piece. Candidates present their research and planning in either paper-based or digital format and do an evaluation in digital format, based on seven required prompt questions.

### A2

#### **G325: Critical Perspectives in Media (25% of overall A Level) 2 hour written examination.**

This paper covers the two areas of Theoretical Evaluation of Production alongside a study of Contemporary Media Issues. In Section A, candidates describe and evaluate their skills development in their production work and then select one production to

evaluate in relation to a media concept. In Section B, candidates choose one topic and then demonstrate their understanding of a contemporary issue through a range of texts, institutions, audiences and debates.

#### **G324: Advanced Portfolio in Media (25% of overall A Level)**

Practical unit, internally assessed and externally moderated.

This is a coursework unit where candidates engage with contemporary media technologies to produce a media portfolio through a combination of two or more media and then present their research, planning and evaluation in digital format. This is a development of the skills from Unit G321. Candidates will create a music promo package including a music video, album cover and magazine advert.

#### **Is there anything else I should know?**

Media studies is for you if you want a course which balances examination and coursework production, if you want to develop your creative and technical skills in media production and if you already enjoy analysing and discussing media you have watched or read. You don't have to have studied Media Studies at GCSE level to be able to succeed at A Level. The course is designed to integrate students who are new to the subject as well as those who have studied previously.

#### **Progression Routes**

Media studies naturally leads to careers in journalism, marketing, advertising or public relations. Awareness of how the world of media works can also support other careers, such as social work, law and education. By knowing how the media operates you'll be able to interpret information more skilfully, and engage with topics that interest you. Students work individually as well as in groups which is attractive to employers as it demonstrates a focus for work as well as social skills required to work with others. Students studying Media Studies will also be using industry standard software on Apple iMacs to equip them appropriately for a variety of careers within the Media industry as well as other design and/or ICT based jobs.

This subject is a BTEC National Award equivalent to one A Level. This two year course gives musicians the chance to develop their musical skills beyond GCSE level. It combines study of performance, composition and theory work. The BTEC in Music is suitable for students who play and perform on an instrument or are capable of delivering a vocal performance to a good standard.

There will be a mixture of written and practical work and regular performance events to present coursework both in and out of school time. The language and traditions of music from many cultures is studied, as well as examples from a huge range of styles including Classical, Rock, Electronic, Folk and Jazz.

### How is the course structured?

The BTEC Level 3 in Music is run over two years and content is broken down into units. Each unit is worth a specific amount of credits and to successfully complete the course, you must complete a total of 60 credits. You must complete the selected units in order to achieve the required amount of credits. Each assignment has a specific vocational context and a scenario in order to allow students to relate their studies to the working environment.

### Units studied over the 2 years:

Unit 4	Aural Perception Skills
Unit 23	Music Performance Techniques
Unit 30	Pop Music in Practice
Unit 38	The Music Freelance World
Unit 40	Working and Developing as a music Ensemble
Unit 43	Special Subject Investigation

### Assessment:

All assessment is made through completion of assignments and coursework - there is no formal exam at the end of the course. Each unit has a number of assignments to complete in order to fulfil the individual unit requirements. Within assignments, tasks will be completed to PASS, MERIT or DISTINCTION level. Each individual assignment must be completed to at least a pass level in order to pass the whole unit.

On successful completion of a unit, points are awarded depending upon the level of completion and the credit value of the unit. At the end of the course, the points will be added from all completed units to make a combined total points score. The course provides the flexibility of completing 3 of the core units equivalent to 1 GCE AS Level in one year.

**Overall PASS** - Equivalent to E grade

**Overall MERIT** - Equivalent to C grade

**Overall DISTINCTION** - Equivalent to A grade

**Overall DISTINCTION\*** - Equivalent to A\* grade

### Is there anything else I should know?

Due to the course content it is advisable to have studied Music; however, promising musicians who have a good standard of performance but have not studied the subject in Year 11 should talk to the Music staff about their suitability for the course.

### Progression Routes

The qualification can provide the UCAS points required to allow access to higher education courses such as degrees and foundation degrees. Potential occupations include opportunities in teaching, promotions, performance, publishing, music therapy and the media.



This course is a BTEC National Award, equivalent to one A Level. Spread over two years, the Performing Arts course covers a wide spectrum of performance based activities in order for learners to experience every aspect of drama and theatre. Learners will develop the technical and interpretative skills necessary to work in many areas of the performing arts. Learners will explore the means and processes of characterisation, interpret texts, develop material for performance through rehearsal and take part in performances of rehearsed material. Although the emphasis is on practical work to develop and expand vocal skills, improvisation and technical understanding, the course does contain elements of theory and written work which is collated throughout the course in a portfolio of evidence.

## Assessment

Assessment is carried out over the two years of the course through practical drama sessions, written projects, presentations, essays and performances. You will have the opportunity to discuss possibilities for pathways through 2 core units plus 4 Specialist Units. The course provides the flexibility of completing 3 of the core units equivalent to 1 GCE AS Level in one year.

## These include:

**Unit 7 Performing to an Audience:** This unit gives the learner the opportunity to undertake, prepare and perform a role as part of a performing arts company presenting work to an audience. It can therefore be seen as the 'icing on the cake', the culmination of work carried out in training and skills development in the respective performance disciplines.

**Unit 19 Principles of Acting:** In this unit the learner will study key principles of acting using a range of techniques. Learners will explore these principles both theoretically and practically and use their skills and techniques to develop characterisation and rehearse material for performance.

**Unit 9 Devising Plays:** This unit provides opportunities for learners to learn about all aspects of producing a piece of Drama. Learners will select a topic of interest and devise a play for live performance. During the rehearsal process learners will direct, perform and create sets/costumes for their final performance work.

**Unit 14 Musical Theatre Performance:** Learners will rehearse and perform a role within a musical theatre performance in order to gain the experience of combining acting, singing and dancing abilities and skills.

**Unit 10 Theatre in Education:** This unit gives learners opportunities to work as a Theatre Company and tour a piece of work within school or in the local and wider community. The unit involves learners liaising with professional T.I.E. companies and writing a script for live performance.

**Unit 18 Auditions for Actors:** This unit provides opportunities for you to prepare and develop monologues for various audition situations., studying works of Shakespeare as well as a contrasting contemporary performance.

Assignments must be completed for each unit, within set deadlines. On completing this Award pupils will be awarded either a Pass, Merit or Distinction grade.

All units must be completed for the final award.

**Overall PASS** - Equivalent to E grade

**Overall MERIT** - Equivalent to C grade

**Overall DISTINCTION** - Equivalent to A grade

**Overall DISTINCTION\*** - Equivalent to A\* grade

## Is there anything else I should know?

The course combines particularly well with other Arts related qualifications such as Music, Media, Art and Textiles.

## Progression Routes

The Performing Arts course is an excellent preparation for the further study of Acting at Drama School or university, as well as for a wide range of other related areas within the Theatre Industry.

This subject is offered as an A Level course. The beauty of Philosophy and Ethics is that it allows for personal reflection, discussion, the formation of argument and the debating of relevant ethical ideas. Your lessons will allow you to deepen your thoughts and ideas, challenge traditional concepts and arguments and articulate your reasoning and evaluation of moral issues.

## Assessment

You will take an examination (1 hour 15 mins) comprising of two questions for each module of the course. There are two modules at AS Level and a further two at A2 Level consisting of the Philosophy of Religion and Religious Ethics.

**In AS Philosophy of Religion (50% of AS course) you will study the following areas:**

- The Cosmological Argument for the existence of God.
- The Religious Experience Argument for the existence of God.
- The conflict of atheism and postmodernism for belief in God.
- The psychological challenge to religion.

**In AS Religious Ethics (50% of AS course) you will study the following areas:**

- Utilitarianism.
- Situation Ethics.
- Religious teaching on the nature and value of human life.
- Abortion and Euthanasia.

**At A2 you will broaden and develop your learning in the two elements**

**In A2 Religious Ethics (50% of A2 course) you will study the following areas:**

- Libertarianism, free will and determinism
- Virtue ethics
- Religious views on sexual behaviour and human relationships
- Science and technology

**In A2 Philosophy of Religion (50% of A2 course) you will study a topic in depth, from one of the following choices:**

- Life, death and beyond
- Perceptions of ultimate reality
- Religious experience

This will involve studying a set text linked to this particular area and be able to critically analyse the text.

## Is there anything else I should know?

There is no coursework in Religious Studies.

Religious Studies combines well with Humanities Subjects, Sociology and Psychology.

## Progression Routes

Religious studies is a good choice for students looking to progress into careers such as Teaching, Law, Journalism, Medicine, Social Work, and work for any Policing or Government Organisations.

Do you have a genuine interest in sport? Are you interested in pursuing a career related to physical education, sport or fitness and health?

The Edexcel BTEC Level 3 in Sport is equivalent to one A Level. It is a natural progression from the Edexcel BTEC Level 2 Extended Certificate in Sport and is designed to further develop you into an independent learner.

Throughout the course you will study a variety of topics and build upon your knowledge and understanding of the world of sport. The nature of the course not only gives you the opportunity to develop your knowledge and understanding of aspects of sport but it also allows you to improve your organisational skills, time management and the ability to apply learning to a vocational context. You will develop personal skills and attitudes essential for successful performance at university and in working life.

## How is the course structured?

The BTEC Level 3 in Sport is run over two years and content is broken down into units. Each unit is worth a specific amount of credits and to successfully complete the course, you must complete a total of 60 credits. You must complete the selected 7 units in order to achieve the required amount of credits. Each assignment has a specific vocational context and a scenario in order to allow students to relate their studies to the working environment.

## Units studied over the 2 years:

<b>Unit 1</b>	Principles of Anatomy and Physiology in Sport (5 credits)
<b>Unit 2</b>	The Physiology of Fitness (5 credits) Unit 3 - Assessing Risk in Sport (10 credits)
<b>Unit 7</b>	Fitness Testing for Sport and Exercise (10 credits)
<b>Unit 8</b>	Practical Team Sports (10 credits)
<b>Unit 13</b>	Leadership in Sport (10 credits)
<b>Unit 17</b>	Psychology for Sports Performance (10 credits)

## Assessment

All assessment is made through completion of assignments and coursework - there is no formal exam at the end of the course. Each unit has a number of assignments to complete in order to fulfil the individual unit requirements. Within assignments, tasks will be completed to PASS, MERIT or DISTINCTION level. Each individual assignment must be completed to at least a pass level in order to pass the whole unit.

On successful completion of a unit, points are awarded depending upon the level of completion and the credit value of the unit. At the end of the course, the points will be added from all 7 units to make a combined total points score.

**Overall PASS** - Equivalent to E grade

**Overall MERIT** - Equivalent to C grade

**Overall DISTINCTION** - Equivalent to A grade

**Overall DISTINCTION\*** - Equivalent to A\* grade

## Is there anything else I should know?

The Edexcel BTEC Level 3 in Sport can be studied with a variety of other subjects to suit the needs of the student. It is widely accepted by universities and, during the UCAS application process, students will need to provide details of attainment/expected attainment within individual units.

## Progression Routes

Many students who study PE continue their sporting studies at university. The Level 3 course is excellent preparation for entering university courses such as Sports Science, Physiotherapy, Sports Development, Sports Coaching and PE Teaching.

You will gain an awareness of the on-going development of new ideas in physics and of the application of in-depth knowledge of well-established topics such as electricity. Particle physics introduces you to the fundamental properties and nature of matter, radiation and quantum phenomena. In contrast, the study of electricity builds on and develops previous GCSE knowledge and understanding and provides opportunities for practical work and looks into important applications. You will also explore mechanics, materials and waves that builds on the knowledge and skills gained at GCSE. At A-Level you will further develop your skills and understanding of mechanics and complement this with topics relating to magnetic and electrical fields that naturally leads into studying about capacitors and how quickly they charge and discharge through resistors.

## Assessment

As with Biology and Chemistry, Physics is taught as a linear course that is assessed by examinations in June.

## AS Units and assessment:

1. Measurements and their errors.
2. Particles and radiation
3. Waves
4. Mechanics and materials
5. Electricity

**Paper 1:** Sections 1-5, 1hr 30, 70 marks, 50% of AS grade. Short and long answer questions split by topic.

**Paper 2:** Sections 1-5, 1hr 30, 70 marks, 50% of AS grade.

**Section A:** 20 marks of short and long answer questions on practical skills and data analysis.

**Section B:** 20 marks of short and long answer questions from across all areas of AS content.

**Section C:** 30 multiple choice questions.

## A2 Units and assessment:

6. Further mechanics and thermal physics
7. Fields and their consequences
8. Nuclear physics.

## Option Units:

9. Astrophysics
10. Medical physics
11. Engineering physics
12. Turning points in physics
13. Electronics

**Paper 1:** Sections 1-5 and 6.1, 2 hours, 85 marks, 34% of A-Level. 60 short and long answer questions split by topic. 25 multiple choice questions.

**Paper 2:** Sections 7,8 & 6.2 with assumed knowledge from sections 1-5. 2 hours, 85 marks, 34% of A-Level. 60 short and long answer questions split by topic. 25 multiple choice questions.

**Paper 3:** Practical skills, data analysis and option module. 2 hours, 80 marks, 32% of A-Level. 45 marks of short and long answer questions on practical skills and data analysis.

## Is there anything else I should know?

This course is suited to students who have achieved a grade B or above in Mathematics and Core and Additional Science or Triple Science at GCSE.

## Progression Routes

Physics is highly regarded and considered a 'facilitating subject' for the top universities in the country, regardless of the degree that you wish to study. It provides an excellent grounding for those wishing to progress onto Law and other traditionally 'humanities' subjects but also for Medicine and Veterinary Science as well as Business or Management.

Physics is a good choice for students looking to progress into careers such as Engineering, Electronics, Education, IT and Software Design, Medicine, Domestic Energy Supply, Dentistry and Veterinary Science.



This subject is offered as an A Level course. Psychology is the scientific study of human behaviour and mental processes and how they are affected and/or affect an individual's or group's physical state, mental state and external environment. Its goal is to describe, understand, predict and modify behaviour.

The course allows you to study theories, research, terminology, concepts, studies and methods as well as to develop skills of analysis, interpretation and evaluation. You will develop an understanding of different areas of Psychology, including Cognitive, Social, Developmental and Physiological Psychology, Individual Differences and Research Methods. You will also explore ethical issues in Psychology, including the implications of research. You must have achieved at least a C grade in GCSE English and Mathematics to take this course.

## Assessment

The course allows AS and A level classes to be co-teachable. Students could gain an AS qualification in Psychology at the end of Year 12 after sitting two examinations or they could instead carry their learning into Year 13 where they would sit several examinations and receive an A level qualification.

The subject is assessed through examinations at the end of the AS year / A level year. Over the two year course students will learn about a range of psychological topics such as:

- Social influence: this concerns the changing of human behaviour through obedience and conformity;
- Memory: this will allow students to understand both short and long term memory;
- Attachment: students will learn about how attachment is formed alongside theories explaining why attachment is formed;
- Approaches in Psychology: this will include psychodynamic, cognitive, behavioural and biological approaches;
- Psychopathology: this will explain mental disorders such as phobias, depression and schizophrenia;
- Research Methods: this concerns the process of conducting psychological research such as experiments and observations as well as the analysis and interpretation of data;
- Students will also have the opportunity to study some psychological topics in more detail; these will be chosen from a range of options including aggression, forensics, eating behaviour, relationships and gender.

## Progression Routes

The subject combines well with English, Biology, Maths, Sociology, Religious Studies and History. A degree in Psychology offers graduates a wide choice of future employment opportunities such as Teaching, Clinical/ Occupational/ Developmental/ Forensic/ Sports Psychologist roles as well as providing valuable transferable skills that can apply to a wide range of occupations.

This subject is offered as an Applied A Level. If you have enjoyed science at KS4 but do not want to study separate sciences at degree level, then Applied Science could be for you. There are many areas of work that require people with science skills and analytical abilities that do not work in an explicitly scientific field. This can mean excellent job prospects and career opportunities as the breadth of your studies will be impressive. The course includes portfolio-building which means you can achieve your potential by keeping up-to-date with your portfolio and making improvements as guided and supported by your teachers.

## Assessment

Assessment in this course is 66% internal assessment and 33% external exam.

## AS

### Investigating Science at Work

A portfolio of evidence is built around scientific industries, their work, health, safety and hazards. 33.3% of AS Level, internally assessed.

### Energy Transfer Systems

The only examination in AS, this unit covers circulatory and respiratory systems, monitoring, control and data capture and finally energy transfers in machines. 33.3% of AS Level, externally assessed exam.

### Finding out about Substances

This is a chemistry based portfolio where an evidence base is built around practical investigations written in an industry report format. 33.3% of AS Level, internally assessed portfolio.

## A2

### Planning and Carrying Out a Scientific Investigation

This is an extended investigation where you plan and carry out an investigation to collect and then analyse the data, drawing relevant conclusions. 16.7% of A Level, internally assessed portfolio.

### The Healthy Body

The only examination in A2, this unit covers the body's homeostatic mechanisms, cellular respiration, the monitoring of certain factors in the body and diet (including the structure and function of the digestive system). 16.7% of A Level, externally assessed exam.

## Sports Science

A portfolio of evidence is built up around the areas of Health and Fitness, Sports Injuries, First Aid and occupations involving the application of Science in sport. 16.7% of A Level, internally assessed portfolio.

## Is there anything else I should know?

This course would be suited to students who have followed the Core and Applied Science courses in Years 10 and 11 and achieved a Grade C or above.

## Progression Routes

Applied Science is a good choice for students looking to progress into careers such as Nursing, Healthcare, Sport Science Support Services, Laboratory Technician, assisting with Chemical, Biological and Physical Research, Education and Manufacturing Industries.

This subject is offered as an A Level course. Sociology entails the scientific study of human society. Sociology is the systematic study of human groups and social life in modern societies. It is a subject which looks at how people lead their lives and how they communicate with one another. It investigates social areas such as Education, the Family, Power and Politics, Crime and Deviance, Poverty, the Media, Religion and Methodology.

Methodology introduces us to the use of research methods, something which is of great importance in higher education. The study of Sociology leads to the understanding of complex issues and it is a good basis for university level study in all disciplines. This course requires a desire on the part of the student to evaluate society and its structures. It is essential, therefore, that you take an active interest in current affairs.

You must have achieved at least a C grade at GCSE English and Mathematics to take this course.

## Assessment

The course allows for AS and A level classes to be co-teachable. Students could gain an AS qualification in Sociology at the end of Year 12 after sitting two examinations or they could instead carry their learning into Year 13 where they would sit several examinations and receive an A level qualification.

The Sociology course is assessed through examinations. Students taking the AS/A Level course will study a range of topics which may include:

- family, including its changing pattern and government policies;
- education, including the hidden curriculum and government policies;
- research methods, such as ethical issues and observations;
- theories, such as functionalism, Marxism and feminism;
- religion, including secularisation and cults;
- culture, including ethnic diversity and its effect on modern life;
- health, including the impact of the NHS and welfare policies;
- crime, including the effects of social class and age.

Students will be expected to sit examinations at the end of their AS/A level. Some questions will require short answers and students will also be expected to provide longer essay based questions on some of the above topics.

## Is there anything else I should know?

A Level Sociology combines well with English, History, Psychology and Religious Studies.

## Progression Routes

Many students who study Sociology go on to university to study Criminology or Sociology. Both degrees offer graduates a wide choice of future employment opportunities such jobs in Higher Education or in Social Services such as Social Work, Mental Health Nursing, Counselling and Teaching.

Are you a linguist? Are you a good communicator? Do you enjoy travelling to new places? Are you interested in people and other cultures? Then you should be considering studying Spanish to AS and A2 level! More and more universities are asking for a language qualification for their courses, irrespective of your chosen career path.

In addition to lessons with your teachers each week you will have extra conversation classes with a native Spanish speaker to improve your accent and the style of your spoken Spanish. You will take advantage of the instant access to authentic materials that the internet affords us and use your language in real life situations.

There will also be the opportunity to travel to Spain to practise your skills and immerse yourself in the Spanish culture. The course is divided into 4 units, two studied at AS and two at Advanced level. You will develop and refine your listening, speaking, reading and writing skills as well as revising and building on the grammar already learnt at GCSE to improve the complexity and fluency of your language.

#### At AS you will study various themes including:

- Education and Future Careers
- Travel and Tourism
- Healthy Lifestyles
- Family and Relationships

#### At Advanced level you study the themes of:

- Environment
- The Multicultural Society
- Contemporary Social Issues
- as well as two cultural topics from Spanish cinema, Spanish literature or a Spanish region

#### AS

##### Unit SN1 40%

Speaking (15 minutes)

Part 1 Discussion of a stimulus card

Part 2 Conversation on yourself, interests and future plans. Taken in May of AS year.

##### Unit SN2 60%

Listening, Reading and Writing (2.5 hours)

Listening and Responding, Reading and Responding, Grammar tasks, Translation Spanish-English, Essay in Spanish on themes covered in lessons.

#### A2

##### Unit SN3 40%

Speaking (15 minutes)

Part 1 Discussion of a stimulus card

Part 2 Exposé and discussion on a cultural topic covered by the candidate. Taken in May of A2 year with external examiner.

##### Unit SN4 60%

Listening, Reading and Writing (3 hours)

Listening and Responding, Reading and Responding, Translation English - Spanish, Essay in Spanish on one of the cultural topic areas: Spanish film, book or region.

#### Is there anything else I should know?

You must have at least a grade C at GCSE in Spanish. There is no coursework element in Spanish A level.

#### Progression Routes

Spanish is highly regarded and considered a 'facilitating subject' for the top universities in the country, regardless of the degree that you wish to study. It provides an excellent grounding for those wishing to progress onto other traditionally 'humanities' subjects.

The Advanced GCE in Spanish can lead to further study of languages at degree level and can easily be combined with other courses such as Law, English, Business, International Studies as well as other languages that can be taken up at university such as Chinese and Japanese.

Current popular career choices for students of languages include Translation and Interpreting, Business, Journalism, Computing, Law, Publishing, Marketing, as well as Teaching, both in the UK and abroad. Linguists are sought-after employees for many types of business and industry.



This subject is offered as an A Level course. World Development is intended to develop skills of analysis and evaluation, problem solving, independent learning and communication as well as an ability to express viewpoints and opinions. It is a subject which will help you to understand people and their attitudes and beliefs, as well as the global issues that make headline news today. It will develop understanding of the issues that concern people in our society and develop a greater awareness of our role as global citizens. The course is divided into a total of four units: two AS units and two A2 units.

## Assessment

### AS

**Introduction to World Development issues** (70% of AS course)

**Theme 1 -** Development, Resources and Global Citizenship

**Theme 2 -** Poverty and Inequality

Topics such as resource distribution, population growth, sustainable development, poverty, international debt and globalisation will be explored through case studies such as the UK, Nepal, Japan, Kenya, Alaska, China and the Amazon as well as the study of charities such as Oxfam and the development of newer social movements such as Live 8 and Make Poverty History. 1 x written examination - 2 hours

**Portfolio Analysis of World Development Issues** (30% of AS course)

This coursework unit is based on the analysis of three articles (each a maximum of 500 words) on topics taken from Theme 1 (Development, Resources and Global Citizenship). It also involves a comparative essay (1000 words maximum) on a topic taken from Theme 2 (Poverty and Inequality).

### A2

**Concepts and Processes of World Development** (70% of A2 course)

You will study a variety of topics based around the idea of development, such as the economy, trade, aid programmes, education and health. You will complete a case study question and 2 essays within the examination. 1x written exam - 3 hours

**Individual Report** (30% of A2 course)

This coursework unit allows you to explore your own areas of interest in greater depth with particular focus on development issues.

1 x written report (maximum 3000 words)

**Is there anything else I should know?**

A Level World Development combines well with other Humanities subjects including: Geography, History and Politics, as well as the social science subjects such as Sociology. It is preferable that students opting to study World Development have a GCSE in Geography, History or Humanities to ensure they have a solid foundation of some of the concepts studied in this course.

## Progression Routes

The study of World Development can lead to further study at degree level in a variety of subjects such as Social Policy, International Development, Human Resource Management and Environmental Management. It would provide an excellent foundation for pursuing careers in Journalism, the Media, International Relations, Charity Work and any career which requires an understanding of the global issues facing our world today.

# Other Courses

---

## General RE

Whilst in Sixth Form at SJP, all students are required to participate in a General RE course. This lesson is delivered by the RE department and will be a timetabled session for one hour each week. The course that is followed in Year 12 and 13 gives an opportunity for spiritual reflection, including an Advent and Lenten service in the College Chapel and the chance to examine moral issues through discussion and debate. You also gain time for personal reflection and will be asked to get involved in charity work and service to the College and local community throughout the year.

### Assessment

Although there is no external examination, you are required to keep a reflective log in the form of a booklet that will be formally assessed twice throughout the year.

### During the course you will look at the following areas:

- Psycho geometric testing - can others test our personality?
- The Enneagram
- Human Rights: Are Human Rights universal?
- Human trafficking and Asylum
- Gender Issues (including homosexuality)
- The meaning and purpose of life in Christianity and Hinduism
- Ethical Dilemmas
- An understanding of the major world religions
- How to be happy
- The moral maze
- Just War
- The search for God

You will also be given an opportunity to become involved in Fair-trade campaigns and on-going Cafod /Amnesty campaigns.

### Is there anything else I should know?

The skills that students will develop throughout the course will be transferable to any profession or further education: debate, enquiry, service, moral integrity, an ability to understand and respond to the beliefs and perspectives of others and to be community and globally aware. Students would be able to make reference to these in any personal statement or CV.

## GCSE

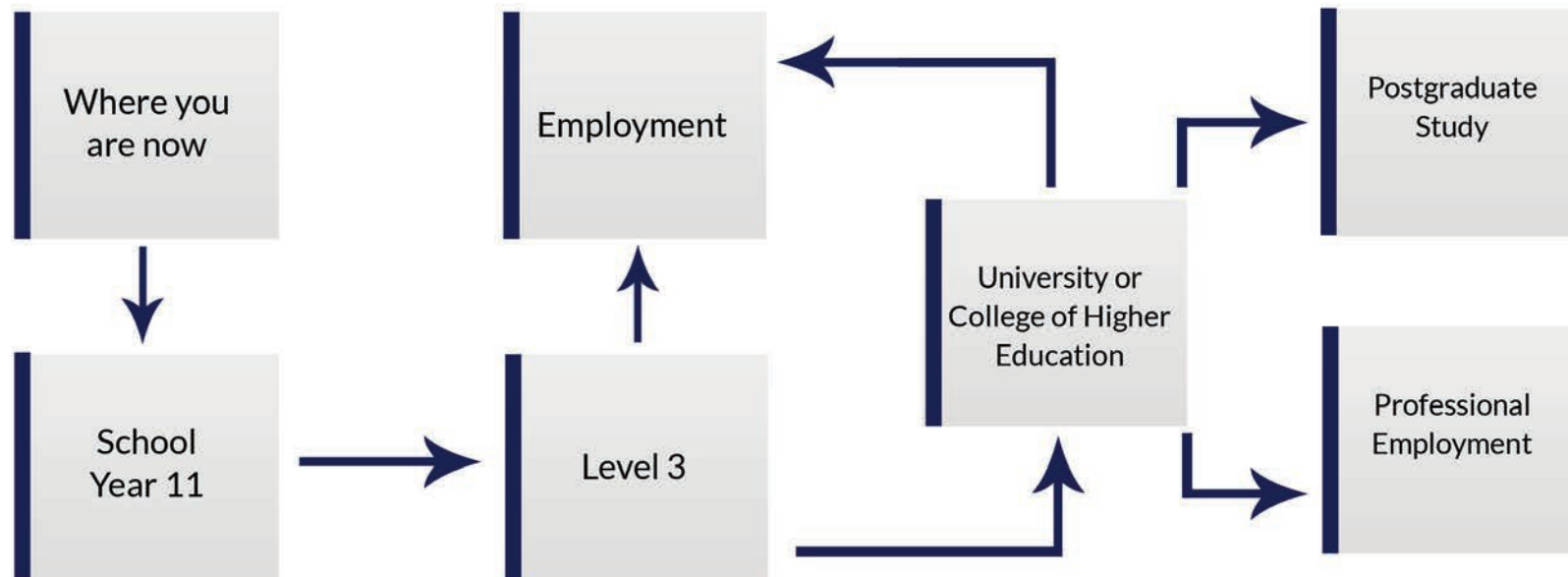
Re-sit courses are available in the following subjects:

GCSE English  
GCSE Mathematics

We expect all students to continue to follow courses in Mathematics and English until they have achieved a minimum of a grade C at GCSE level.

# Pathways to your Future

---



## St John Plessington Catholic College

Old Chester Road, Bebington  
Wirral, CH63 7LF

Tel: 0151 645 5049

Fax: 0151 643 1516

[schooloffice@stjohnplessington.com](mailto:schooloffice@stjohnplessington.com)

[www.stjohnplessington.com](http://www.stjohnplessington.com)

Aspire  
have not to  
but to more  
more be

“ The students at St John Plessington  
are the jewels in the crown  
of this Outstanding College. ” - Ofsted